

AlphaLISA® SureFire® Ultra™

Human and Mouse Src Total Detection Kit

Product number: ALSU-TSRC-A500, ALSU-TSRC-A10K,
ALSU-TSRC-A50K, ALSU-TSRC-A-HV



Kit specificity:

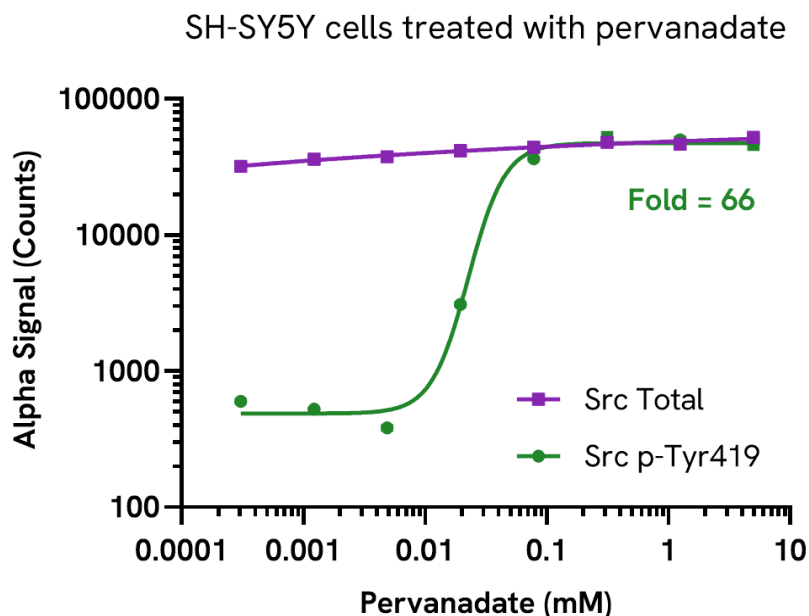
This assay kit contains antibodies which recognize distinct epitopes on Src. The protein detected by this kit corresponds to UniProt ID P12931. Src is also known as Proto-oncogene tyrosine-protein kinase Src. These antibodies recognize Src of human and mouse origin. Other species should be tested on a case-by-case basis.

Control lysate information:

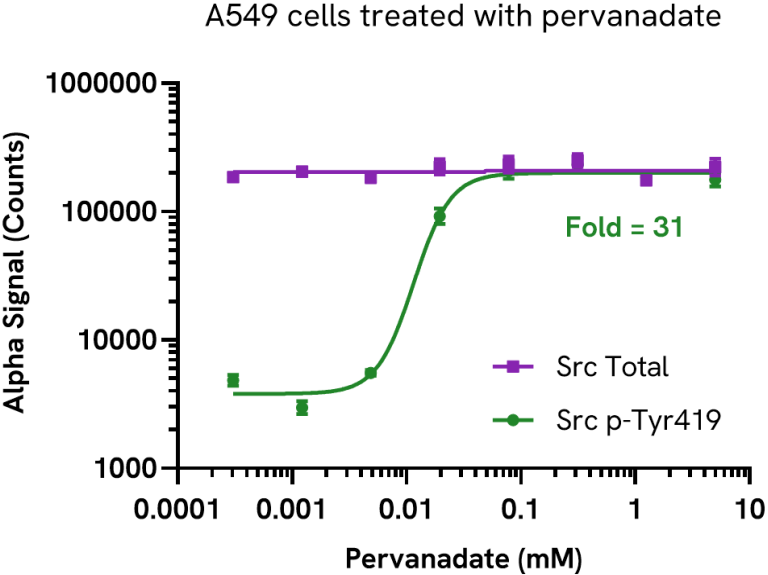
Positive Control Lysate: Prepared from SH-SY5Y cells, cultured to confluence in T175 flasks in 10% FBS containing media and treated with 500 µM Pervanadate for 30 minutes and lysed with 4 mL of Lysis Buffer.

Representative data:

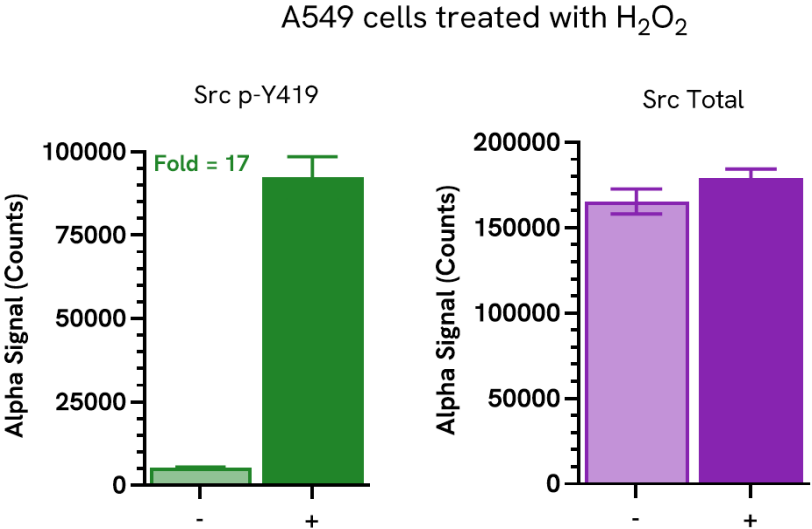
Data obtained with a 2-plate, 2-incubation protocol. SH-SY5Y cells were seeded at 40K cells/well in a 96-well plate and incubated overnight. Cells were treated with the indicated concentrations of Pervanadate for 30 minutes. Cells were lysed with Lysis Buffer and assayed separately for Phospho (Tyr419) and Total Src using respective *SureFire Ultra* kits. Equivalent to approximately 4,000 cells/datapoint.



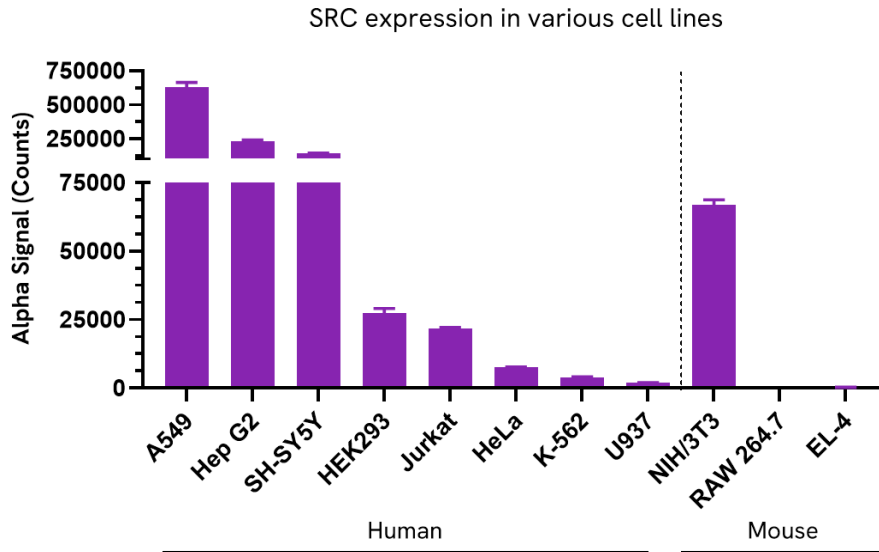
Data obtained with a 2-plate, 2-incubation protocol. A549 cells were seeded at 40K cells/well in a 96-well plate and incubated overnight. Cells were treated with the indicated concentrations of Pervanadate for 30 minutes. Cells were lysed with Lysis Buffer and assayed separately for Phospho (TyrY419) and Total Src using respective *SureFire Ultra* kits. Equivalent to approximately 4,000 cells/datapoint.



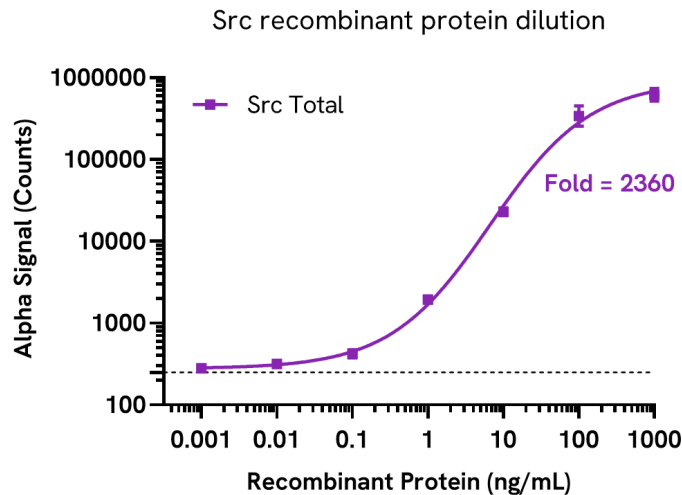
Data obtained with a 2-plate, 2-incubation protocol. A549 cells were seeded at 40K cells/well in a 96-well plate and incubated overnight. Cells were treated with 25 mM of H₂O₂ for 15 minutes. Cells were lysed with Lysis Buffer and assayed separately for Phospho (TyrY419) and Total Src using respective *SureFire Ultra* kits. Equivalent to approximately 16,000 cells/datapoint.



Data obtained from measurement of Src Total in various cell types lysed with Lysis Buffer. Equivalent to approximately 5,000 cells/datapoint for adherent cells and 8,000 cells/datapoint for suspension cells.



Dilutions of recombinant Src recombinant protein (Abcam, ab79635) were prepared in Lysis Buffer and evaluated by *SureFire Ultra*.



The information provided in this document is for reference purposes only and may not be all-inclusive. Revvity, Inc., its subsidiaries, and/or affiliates (collectively, "Revvity") do not assume liability for the accuracy or completeness of the information contained herein. Users should exercise caution when handling materials as they may present unknown hazards. Revvity shall not be liable for any damages or losses resulting from handling or contact with the product, as Revvity cannot control actual methods, volumes, or conditions of use. Users are responsible for ensuring the product's suitability for their specific application. REVVITY EXPRESSLY DISCLAIMS ALL WARRANTIES, INCLUDING WARRANTIES OF MERCHANTABILITY OR FITNESS FOR A PARTICULAR PURPOSE, REGARDLESS OF WHETHER ORAL OR WRITTEN, EXPRESS OR IMPLIED, ALLEGEDLY ARISING FROM ANY USAGE OF ANY TRADE OR ANY COURSE OF DEALING, IN CONNECTION WITH THE USE OF INFORMATION CONTAINED HEREIN OR THE PRODUCT ITSELF"

