

AlphaLISA® SureFire® Ultra™

Human BCR-ABL1 Total Detection Kit

Product number: ALSU-TBCAB1-A500, ALSU-TBCAB1-A10K,
ALSU-TBCAB1-A50K, ALSU-TBCAB1-A-HV



Kit specificity:

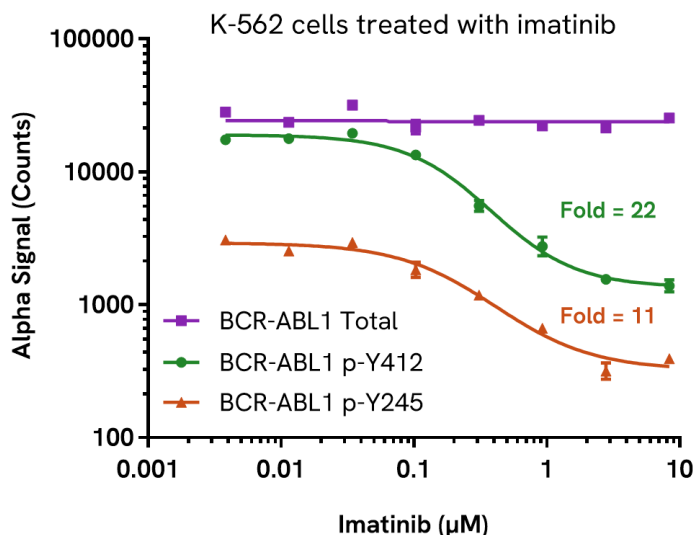
This assay kit contains an antibody that recognizes an epitope on BCR and an antibody that recognizes an epitope on ABL1. This assay will only detect BCR-ABL1 fusion protein. The protein detected by this kit corresponds to UniProt ID A9UF07. BCR-ABL1 is also known as BCR/ABL fusion, Bcr/Abl p190 and Bcr/Abl p210. These antibodies recognize BCR-ABL1 of human origin. Other species should be tested on a case-by-case basis.

Control lysate information:

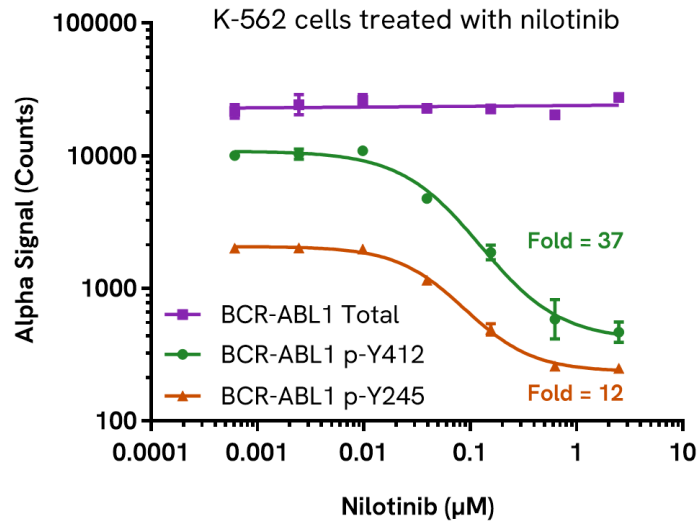
Positive Control Lysate: Prepared from untreated K-562 cells cultured in 10% FBS containing media. Cells were washed in HBSS and lysed with Lysis Buffer at a final concentration of 4×10^6 cells/mL.

Representative data:

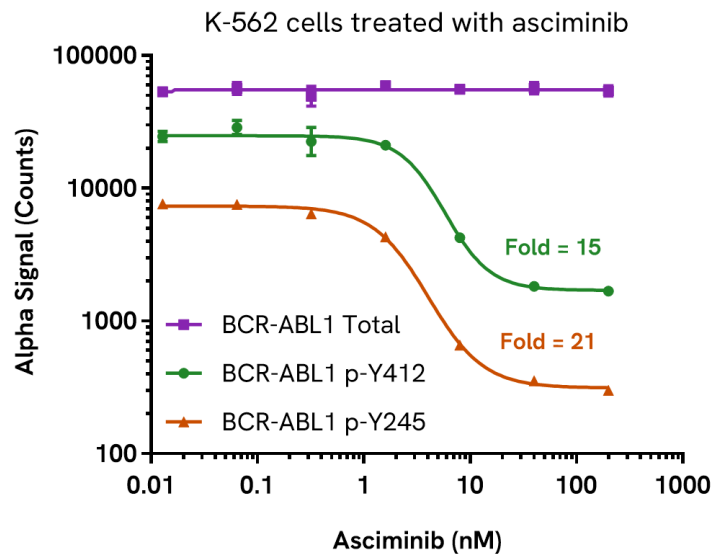
Data obtained with a 2-plate, 2-incubation protocol. K-562 cells were seeded at 100K cells/well in a 96-well plate and treated with imatinib at the indicated concentrations for 6 hours. Cells were lysed with Lysis Buffer and assayed separately for Phospho (Tyr245), Phospho (Tyr412) and Total BCR-ABL1 using respective *SureFire Ultra* kits. Equivalent to approximately 10,000 cells/datapoint.



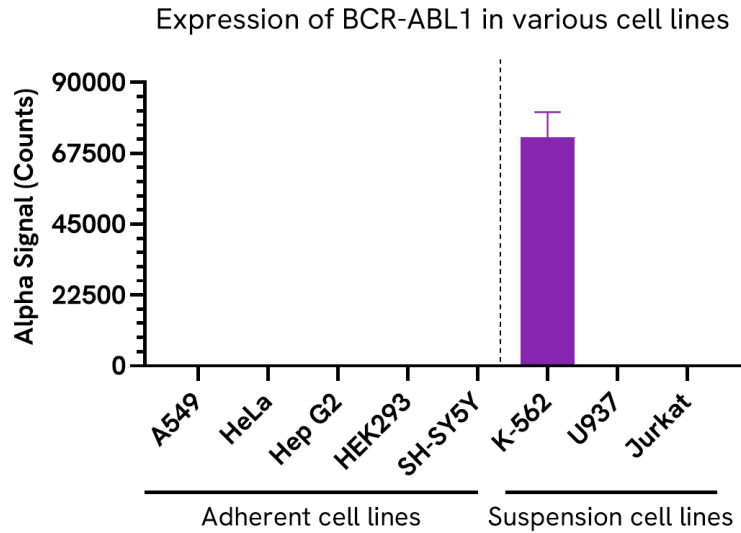
Data obtained with a 2-plate, 2-incubation protocol. K-562 cells were seeded at 100K cells/well in a 96-well plate and treated with nilotinib at the indicated concentrations for 6 hours. Cells were lysed with Lysis Buffer and assayed separately for Phospho (Tyr245), Phospho (Tyr412) and Total BCR-ABL1 using respective *SureFire Ultra* kits. Equivalent to approximately 10,000 cells/datapoint.



Data obtained with a 2-plate, 2-incubation protocol. K-562 cells were seeded at 100K cells/well in a 96-well plate and treated with asciminib at the indicated concentrations for 6 hours. Cells were lysed with Lysis Buffer and assayed separately for Phospho (Tyr245), Phospho (Tyr412) and Total BCR-ABL1 using respective *SureFire Ultra* kits. Equivalent to approximately 10,000 cells/datapoint.



Data obtained from measurement of BCR-ABL1 Total in various cell types lysed with Lysis Buffer. Equivalent to approximately 5,000 cells/datapoint for adherent cells or 15,000 cells/datapoint for suspension cells.



The information provided in this document is for reference purposes only and may not be all-inclusive. Revvity, Inc., its subsidiaries, and/or affiliates (collectively, "Revvity") do not assume liability for the accuracy or completeness of the information contained herein. Users should exercise caution when handling materials as they may present unknown hazards. Revvity shall not be liable for any damages or losses resulting from handling or contact with the product, as Revvity cannot control actual methods, volumes, or conditions of use. Users are responsible for ensuring the product's suitability for their specific application. REVVITY EXPRESSLY DISCLAIMS ALL WARRANTIES, INCLUDING WARRANTIES OF MERCHANTABILITY OR FITNESS FOR A PARTICULAR PURPOSE, REGARDLESS OF WHETHER ORAL OR WRITTEN, EXPRESS OR IMPLIED, ALLEGEDLY ARISING FROM ANY USAGE OF ANY TRADE OR ANY COURSE OF DEALING, IN CONNECTION WITH THE USE OF INFORMATION CONTAINED HEREIN OR THE PRODUCT ITSELF"

