

AlphaLISA® SureFire® Ultra™

Human and Mouse RAB12 Total Detection Kit

Product number: ALSU-TRAB12-A500, ALSU-TRAB12-A10K,
ALSU-TRAB12-A50K, ALSU-TRAB12-A-HV



Kit specificity:

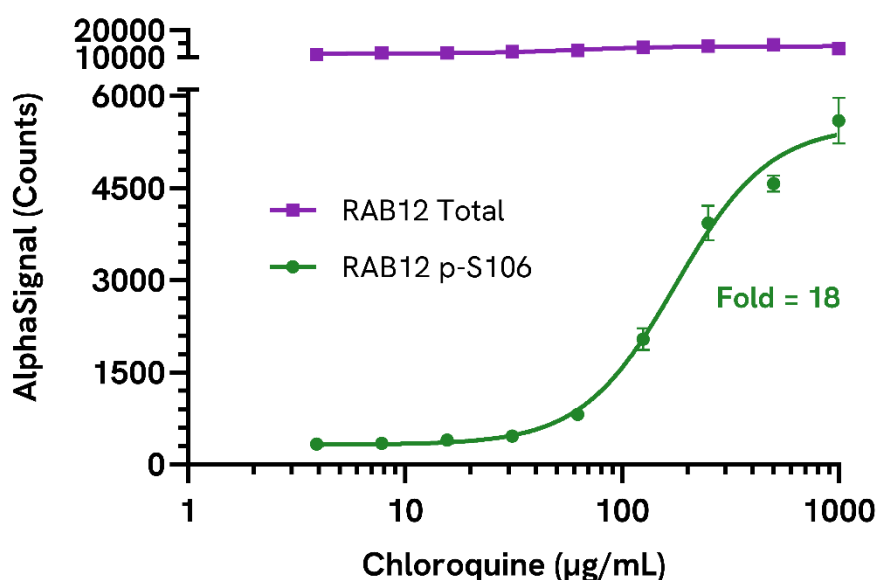
This assay kit contains antibodies which recognize distinct epitopes on RAB12. The protein detected by this kit corresponds to UniProt ID Q6IQ22. RAB12 is also known as Ras-related protein Rab-12. These antibodies recognize RAB12 of human and mouse origin. Other species should be tested on a case-by case basis.

Control lysate information:

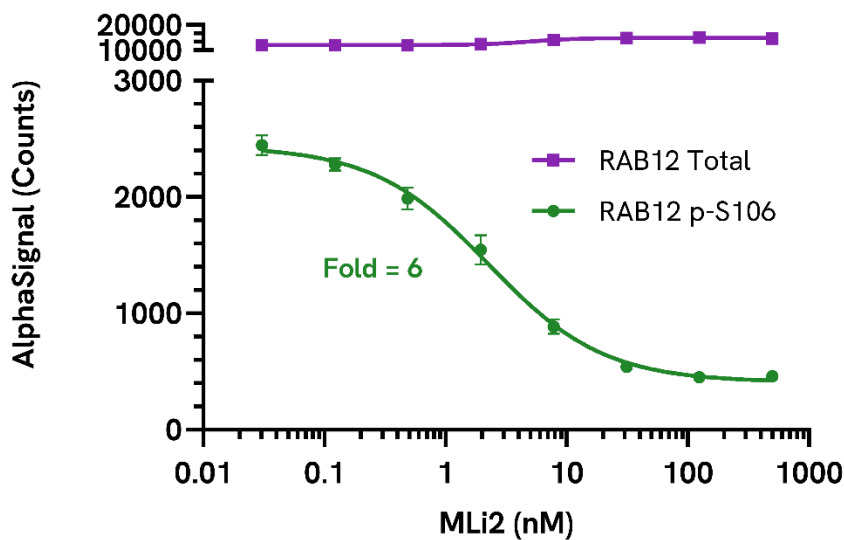
Positive Control Lysate: Prepared from RAW 264.7 cells, cultured to confluence in T175 flasks in 10% FBS containing media, then treated with 1 mg/mL Chloroquine for 3 hours and lysed with 3 mL of Lysis Buffer.

Representative data:

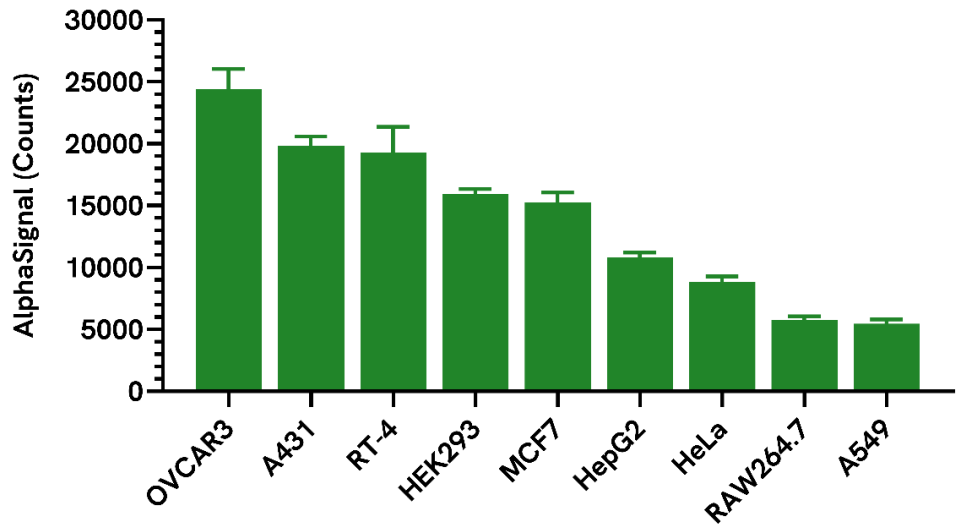
Data obtained with a 2-plate, 2-incubation protocol. HepG2 cells were seeded at 50K cells/well in a 96 well plate and incubated overnight. Cells were treated with Chloroquine at the indicated concentrations for 4 hours. Cells were lysed with Lysis Buffer and assayed separately for Phospho (Ser106) and Total RAB12 using respective SureFire Ultra kits. Equivalent to approximately 5,000 cells/datapoint.



Data obtained with a 2-plate, 2-incubation protocol. RAW 264.7 cells were seeded at 80K cells/well in a 96 well plate and incubated overnight. Cells were treated with MLI2 at the indicated concentrations with 100 µg/mL Chloroquine for 4 hours. Cells were lysed with Lysis Buffer and assayed separately for Phospho (Ser106) and Total RAB12 using respective *SureFire Ultra* kits. Equivalent to approximately 8,000 cells/datapoint.



Data obtained from measurement of RAB12 in various cell types lysed with Lysis Buffer. Equivalent to approximately 4,000 cells/datapoint.



The information provided in this document is for reference purposes only and may not be all-inclusive. Revvity, Inc., its subsidiaries, and/or affiliates (collectively, "Revvity") do not assume liability for the accuracy or completeness of the information contained herein. Users should exercise caution when handling materials as they may present unknown hazards. Revvity shall not be liable for any damages or losses resulting from handling or contact with the product, as Revvity cannot control actual methods, volumes, or conditions of use. Users are responsible for ensuring the product's suitability for their specific application. REVVITY EXPRESSLY DISCLAIMS ALL WARRANTIES, INCLUDING WARRANTIES OF MERCHANTABILITY OR FITNESS FOR A PARTICULAR PURPOSE, REGARDLESS OF WHETHER ORAL OR WRITTEN, EXPRESS OR IMPLIED, ALLEGEDLY ARISING FROM ANY USAGE OF ANY TRADE OR ANY COURSE OF DEALING, IN CONNECTION WITH THE USE OF INFORMATION CONTAINED HEREIN OR THE PRODUCT ITSELF"