

AlphaLISA® SureFire® Ultra™

Human and Mouse CHOP Total Detection Kit

Product number: ALSU-TCHOP-A500, ALSU-TCHOP-A10K,
ALSU-TCHOP-A50K, ALSU-TCHOP-A-HV



Kit specificity:

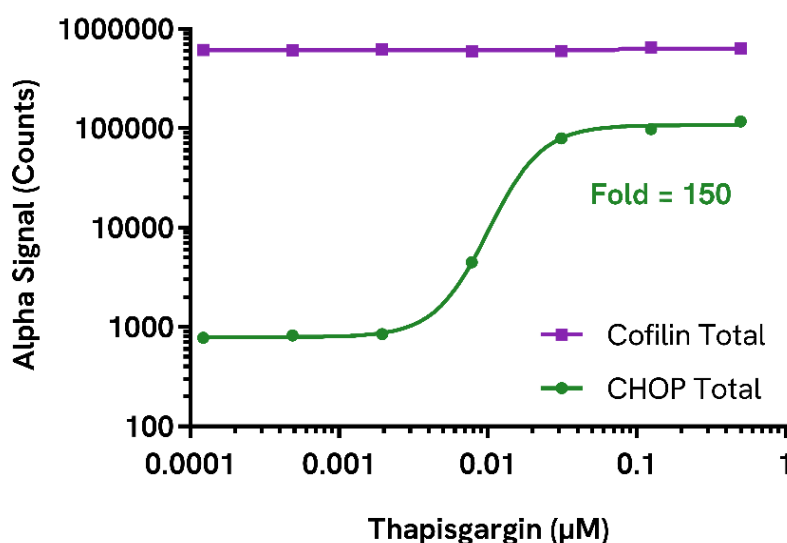
This assay kit contains antibodies which recognize distinct epitopes on CHOP. The protein detected by this kit corresponds to UniProt ID P35638. CHOP is also known as C/EBP-homologous protein, DDIT-3 and GADD153. These antibodies recognize CHOP of human and mouse origin. Other species should be tested on a case-by-case basis.

Control lysate information:

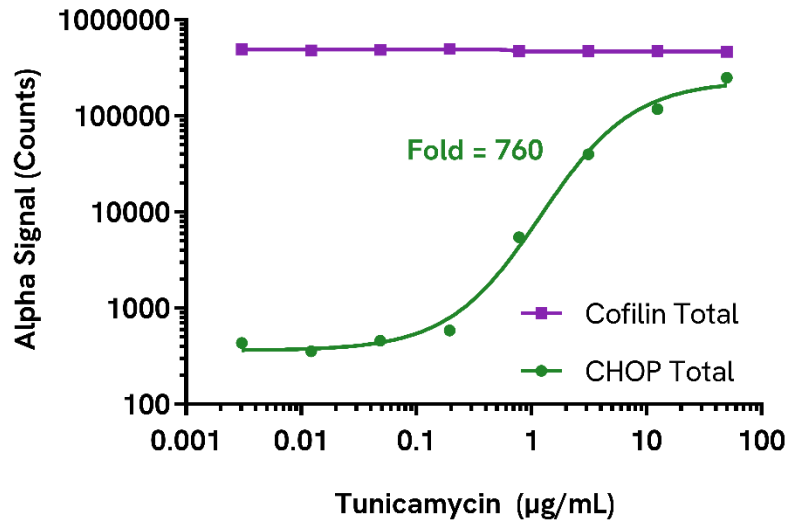
Positive Control Lysate: Prepared from A549 cells, cultured to confluence in T175 flasks in 10% FBS containing medium, then treated with 10 µg/mL Tunicamycin for 4 hours and lysed with 4 mL of Lysis Buffer.

Representative data:

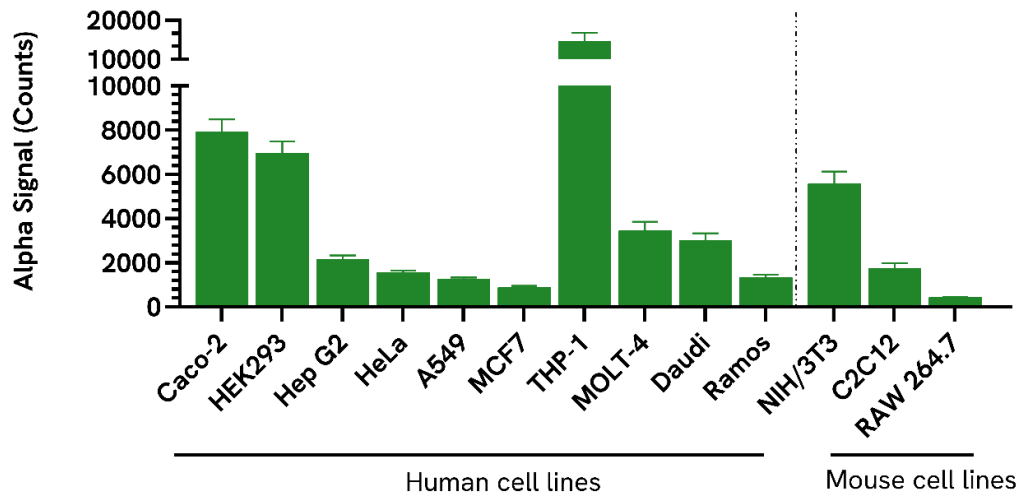
Data obtained with a 2-plate, 2-incubation protocol. A549 cells were seeded at 40K cells/well in a 96 well plate and incubated overnight. Cells were treated with Thapsigargin at the indicated concentrations for 4 hours. Cells were lysed with Lysis Buffer and assayed separately for Total CHOP and Cofilin using respective *SureFire Ultra* kits. Equivalent to approximately 4,000 cells/datapoint.



Data obtained with a 2-plate, 2-incubation protocol. RAW 264.7 cells were seeded at 40K cells/well in a 96 well plate and incubated overnight. Cells were treated with Tunicamycin at the indicated concentrations for 4 hours. Cells were lysed with Lysis Buffer and assayed separately for Total CHOP and Cofilin using respective *SureFire Ultra* kits. Equivalent to approximately 4,000 cells/datapoint.



Data obtained from measurement of CHOP Total in various cell types lysed in Lysis Buffer. Equivalent to approximately 4,000 cells/datapoint (adherent cells) or 40,000 cells/datapoint (suspension cells).



The information provided in this document is for reference purposes only and may not be all-inclusive. Revvity, Inc., its subsidiaries, and/or affiliates (collectively, "Revvity") do not assume liability for the accuracy or completeness of the information contained herein. Users should exercise caution when handling materials as they may present unknown hazards. Revvity shall not be liable for any damages or losses resulting from handling or contact with the product, as Revvity cannot control actual methods, volumes, or conditions of use. Users are responsible for ensuring the product's suitability for their specific application. REVVITY EXPRESSLY DISCLAIMS ALL WARRANTIES, INCLUDING WARRANTIES OF MERCHANTABILITY OR FITNESS FOR A PARTICULAR PURPOSE, REGARDLESS OF WHETHER ORAL OR WRITTEN, EXPRESS OR IMPLIED, ALLEGEDLY ARISING FROM ANY USAGE OF ANY TRADE OR ANY COURSE OF DEALING, IN CONNECTION WITH THE USE OF INFORMATION CONTAINED HEREIN OR THE PRODUCT ITSELF"

