

AlphaLISA™ SureFire® Ultra™

Human c-Kit Total Detection Kit

Product number: ALSU-TCKIT-A500, ALSU-TCKIT-A10K,
ALSU-TCKIT-A50K, ALSU-TCKIT-A-HV



Kit specificity:

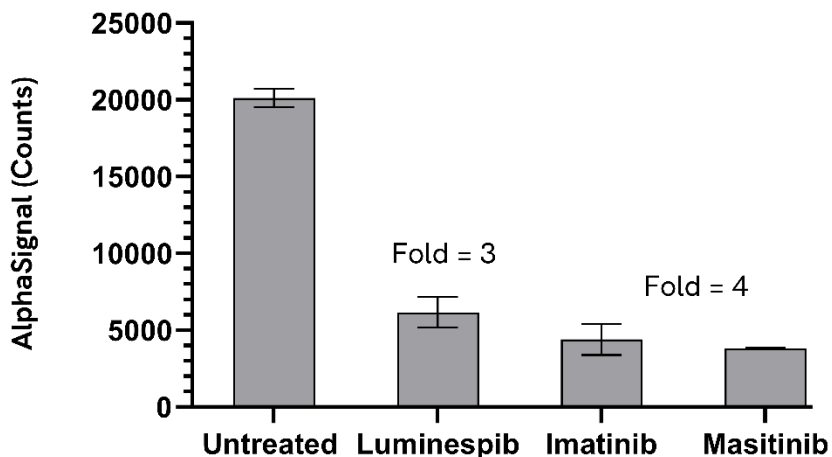
This assay kit contains antibodies which recognize distinct epitopes on c-Kit. The protein detected by this kit corresponds to UniProt ID P10721. c-Kit is also known as Mast/stem cell growth factor receptor Kit and Proto-oncogene c-Kit. These antibodies recognize c-Kit of human origin. Other species should be tested on a case-by-case basis.

Control lysate information:

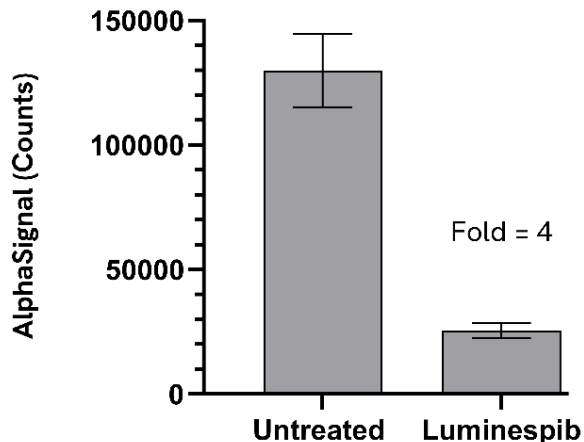
Positive Control Lysate: Prepared from RT4 cells, cultured to confluence in T175 flasks in 10% FBS containing medium and lysed with 8 mL of Lysis Buffer.

Representative data:

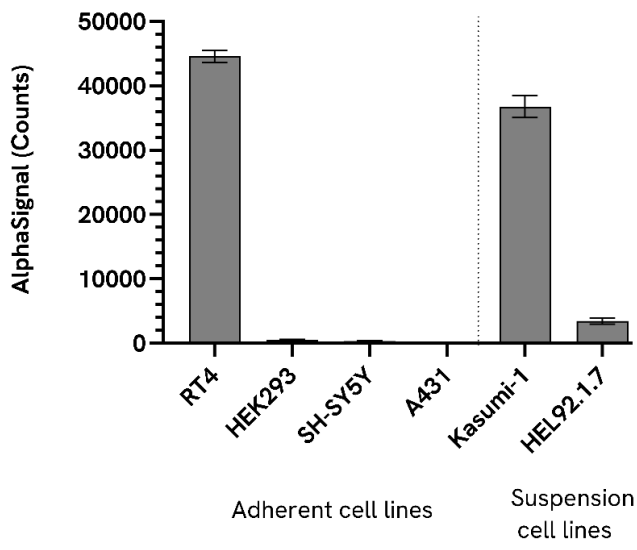
Data obtained with a 2-plate, 2-incubation protocol. RT4 cells were seeded at 40K cells/well in a 96-well plate and incubated overnight. The cells were treated with 10 μM Luminespib, Imatinib or Masitinib for 6 hours in medium containing 1% FBS. Cells were lysed with Lysis Buffer and assayed for c-Kit Total using the *SureFire Ultra* kit. Equivalent to approximately 4,000 cells/datapoint.



Data obtained with a 2-plate, 2-incubation protocol. Kasumi-1 cells were seeded at 400K cells/well in a 96-well plate in medium containing 1% FBS. The cells were treated with 10 μ M Luminespib for 6 hours. After treatment, the cells were spun down, washed with HBSS, lysed with Lysis Buffer and assayed for c-Kit Total using the *SureFire Ultra* kit. Equivalent to approximately 25,000 cells/datapoint.



Adherent cell lines were seeded at 40K cells/well in a 96-well plate in complete medium and incubated overnight. Suspension cells were seeded at 250K cells/well in a 96-well plate in HBSS + 0.1% BSA and lysed with the addition of 5X Lysis Buffer. Cell lines were assayed for c-Kit Total using the *SureFire Ultra* kit. Equivalent to approximately 4,000 cells/datapoint for adherent cell lines and 10,000 cells/datapoint for suspension cell lines.



The information provided in this document is for reference purposes only and may not be all-inclusive. Revvity, Inc., its subsidiaries, and/or affiliates (collectively, "Revvity") do not assume liability for the accuracy or completeness of the information contained herein. Users should exercise caution when handling materials as they may present unknown hazards. Revvity shall not be liable for any damages or losses resulting from handling or contact with the product, as Revvity cannot control actual methods, volumes, or conditions of use. Users are responsible for ensuring the product's suitability for their specific application. REVVITY EXPRESSLY DISCLAIMS ALL WARRANTIES, INCLUDING WARRANTIES OF MERCHANTABILITY OR FITNESS FOR A PARTICULAR PURPOSE, REGARDLESS OF WHETHER ORAL OR WRITTEN, EXPRESS OR IMPLIED, ALLEGEDLY ARISING FROM ANY USAGE OF ANY TRADE OR ANY COURSE OF DEALING, IN CONNECTION WITH THE USE OF INFORMATION CONTAINED HEREIN OR THE PRODUCT ITSELF"

