

AlphaLISA™ SureFire® Ultra™

## Human and Mouse p-Moesin (Thr558) Detection Kit

**Product number:** ALSU-PMOES-A500, ALSU-PMOES-A10K,  
ALSU-PMOES-A50K, ALSU-PMOES-A-HV



**Kit specificity:**

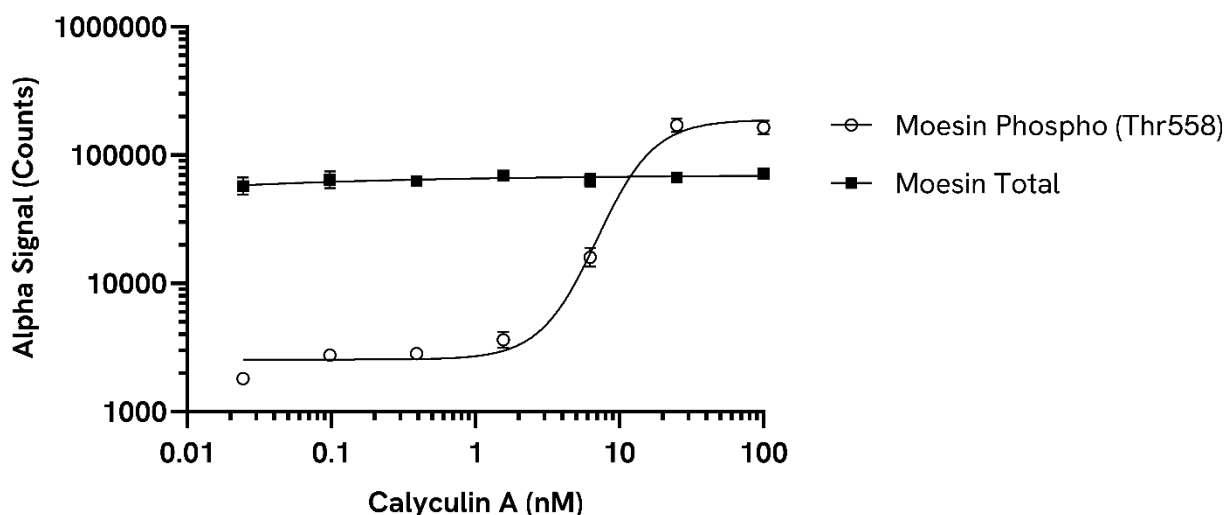
This assay kit contains antibodies which recognize the phospho-Thr558 epitope and a distal epitope on Moesin. The protein detected by this kit corresponds to UniProt ID P26038. Moesin is also known as Membrane-organizing extension spike protein. These antibodies recognize Moesin of human and mouse origin. Other species should be tested on a case-by-case basis.

**Control lysate information:**

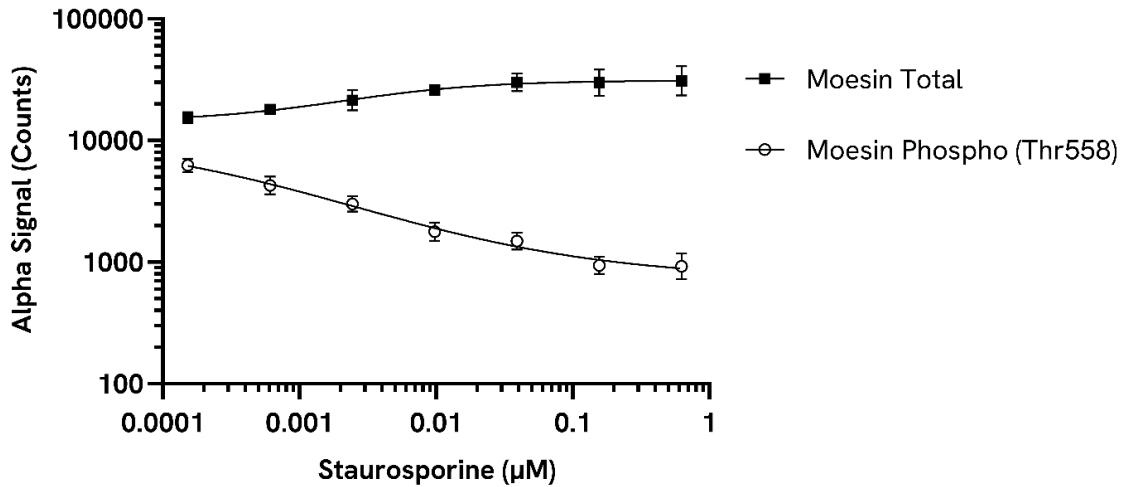
Positive Control Lysate: Prepared from HeLa cells cultured to confluence in T175 flasks in 10% FBS containing medium and lysed with 6 mL of Lysis Buffer.

**Representative data:**

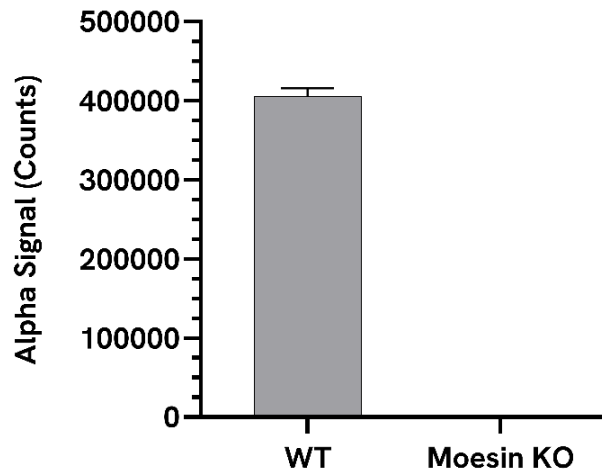
Data obtained by a 2-plate, 2-incubation protocol. HeLa cells were seeded at 40K cells/well in a 96-well plate and incubated overnight. Cells were treated with Calyculin A at the indicated concentrations for 1 hour. Cells were lysed with Lysis Buffer and assayed separately for Phospho (Thr558) and Total Moesin levels using respective *SureFire Ultra* kits. Equivalent to approximately 4,000 cells/datapoint for Total and 400 cells/datapoint for Phospho (Thr558) Moesin.



Data obtained by a 2-plate, 2-incubation protocol. A549 cells were seeded at 40K cells/well in a 96-well plate and incubated overnight. Cells were treated with Staurosporine at the indicated concentrations for 1 hour. Cells were lysed with Lysis Buffer and assayed separately for Phospho (Thr558) and Total Moesin levels using respective *SureFire Ultra* kits. Equivalent to approximately 4,000 cells/datapoint for Total and 1,000 cells/datapoint for Phospho (Thr558) Moesin.



HeLa wild type (WT) and HeLa Moesin knockout (KO, Abcam ab265020) cell lines were cultured to confluence in T75 flasks in 10% FBS containing medium. Cells were lysed with 3 mL of Lysis Buffer and assayed for Phospho (Thr558) Moesin using the *SureFire Ultra* assay. Approximately 10,000 cells/datapoint.



The information provided in this document is for reference purposes only and may not be all-inclusive. Revvity, Inc., its subsidiaries, and/or affiliates (collectively, "Revvity") do not assume liability for the accuracy or completeness of the information contained herein. Users should exercise caution when handling materials as they may present unknown hazards. Revvity shall not be liable for any damages or losses resulting from handling or contact with the product, as Revvity cannot control actual methods, volumes, or conditions of use. Users are responsible for ensuring the product's suitability for their specific application. REVVITY EXPRESSLY DISCLAIMS ALL WARRANTIES, INCLUDING WARRANTIES OF MERCHANTABILITY OR FITNESS FOR A PARTICULAR PURPOSE, REGARDLESS OF WHETHER ORAL OR WRITTEN, EXPRESS OR IMPLIED, ALLEGEDLY ARISING FROM ANY USAGE OF ANY TRADE OR ANY COURSE OF DEALING, IN CONNECTION WITH THE USE OF INFORMATION CONTAINED HEREIN OR THE PRODUCT ITSELF"

