

AlphaLISA™ SureFire® Ultra™

# Human and Mouse Ezrin/Moesin Total Detection Kit

**Product number:** ALSU-TEM-A500, ALSU-TEM-A10K,  
ALSU-TEM-A50K, ALSU-TEM-A-HV



**Kit specificity:**

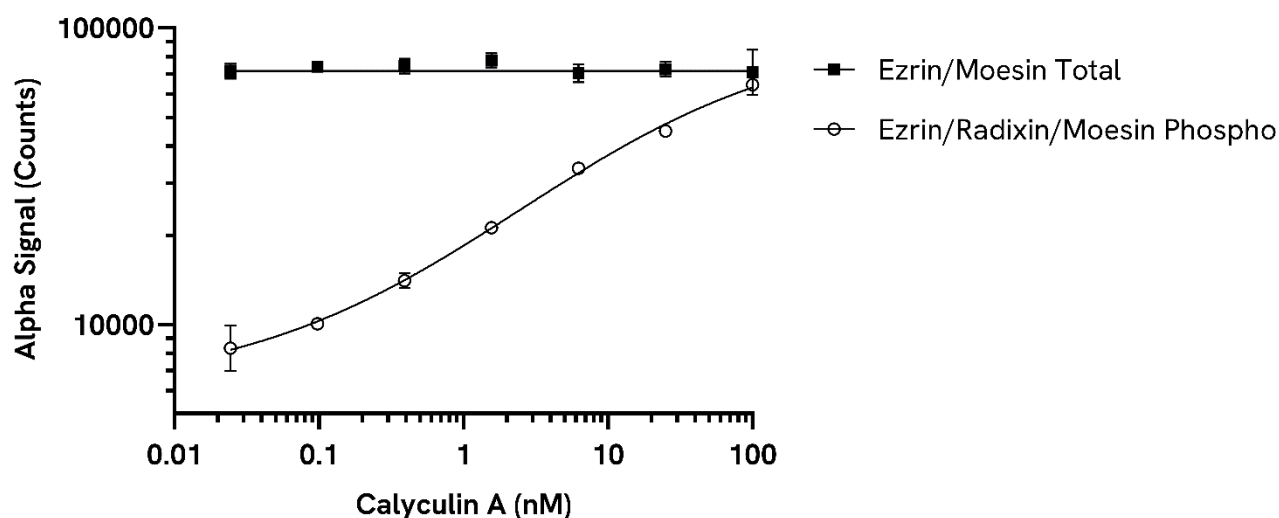
This assay kit contains antibodies which recognize distinct epitopes on Ezrin and Moesin. The proteins detected by this kit correspond to UniProt IDs P15311 (Ezrin) and P26038 (Moesin). These antibodies recognize Ezrin and Moesin of human and mouse origin. Other species should be tested on a case-by-case-basis.

**Control lysate information:**

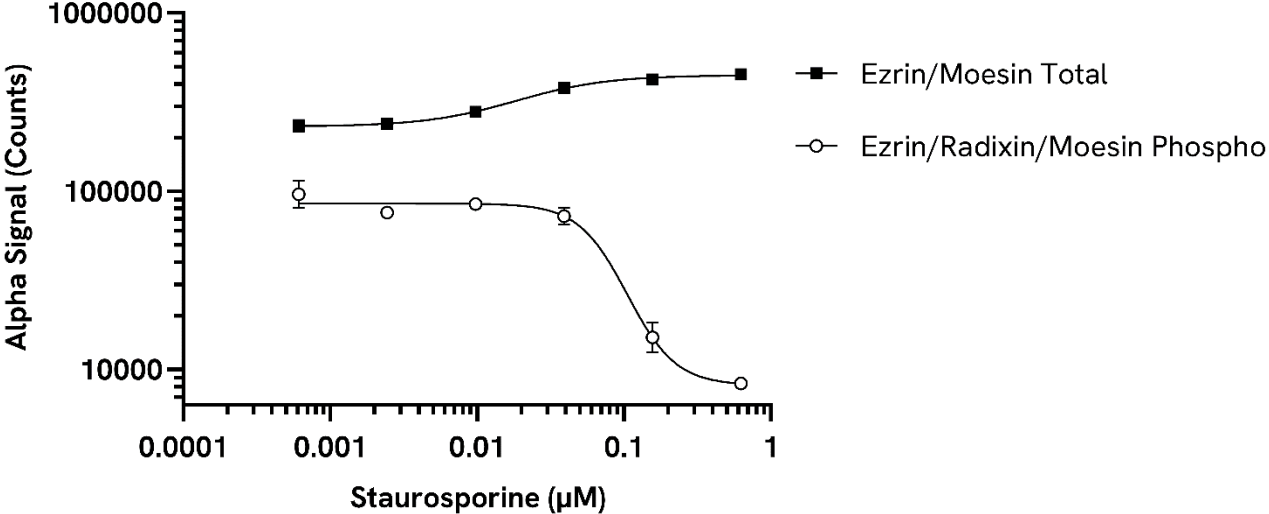
Positive Control Lysate: Prepared from HeLa cells cultured to confluence in T175 flasks in 10 % FBS containing medium and lysed with 6 mL of Lysis Buffer.

**Representative data:**

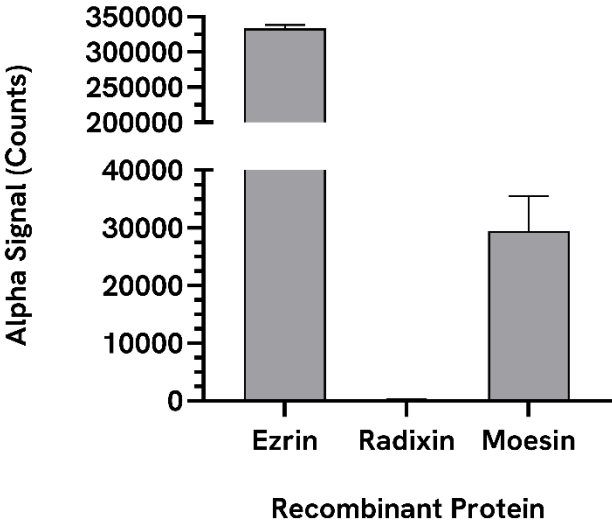
Data obtained by a 2-plate, 2-incubation protocol. HeLa cells were seeded at 40K cells/well in a 96-well plate and incubated overnight. Cells were treated with Calyculin A at the indicated concentrations for 1 hour. Cells were lysed with Lysis Buffer and assayed separately for Phospho Ezrin (Thr567)/Radixin (Thr564)/Moesin (Thr558) and Total Ezrin/Moesin levels using respective *SureFire Ultra* kits. Equivalent to approximately 200 cells/datapoint.



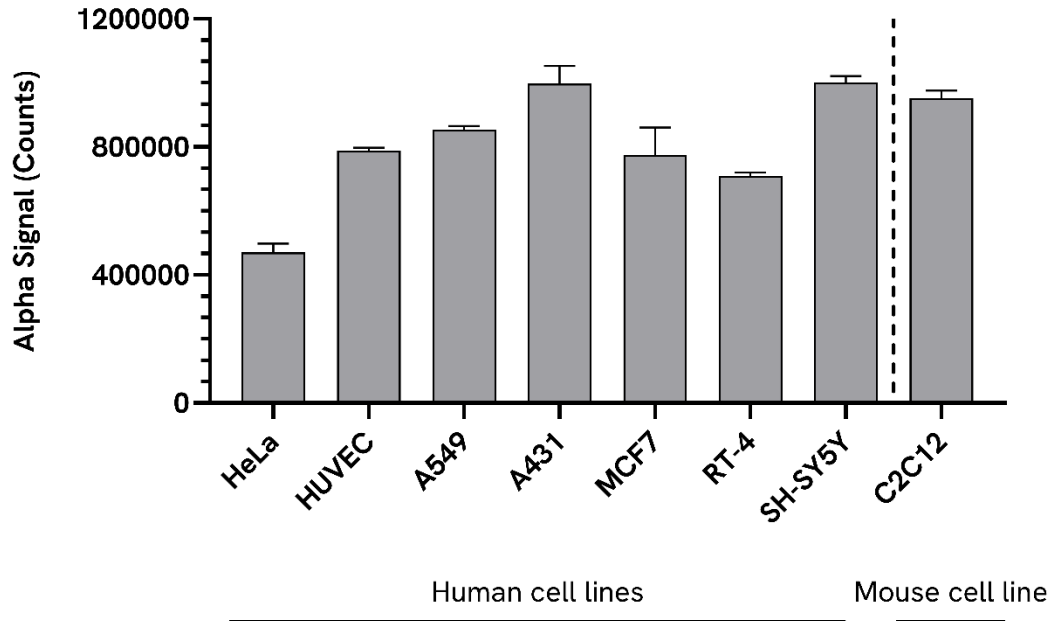
Data obtained by a 2-plate, 2-incubation protocol. A549 cells were seeded at 40K cells/well in a 96-well plate and incubated overnight. Cells were treated with Staurosporine at the indicated concentrations for 1 hour. Cells were lysed with Lysis Buffer and assayed separately for Phospho Ezrin (Thr567)/Radixin (Thr564)/Moesin (Thr558) and Total Ezrin/Moesin levels using respective *SureFire Ultra* kits. Equivalent to approximately 1,000 cells/datapoint.



Recombinant human Ezrin (Abcam, ab132943), Radixin (RayBiotech, 230-30097) and Moesin (RayBiotech, 230-30095) proteins were prepared at a final concentration of 0.5 µg/mL in Lysis Buffer. Ezrin/Moesin Total levels were evaluated using the *SureFire Ultra* assay kit.



Human and mouse cell lysates were diluted with Lysis Buffer to represent approximately 10,000 cells/datapoint. Ezrin/Moesin Total levels were evaluated using the *SureFire Ultra* assay kit.



The information provided in this document is for reference purposes only and may not be all-inclusive. Revvity, Inc., its subsidiaries, and/or affiliates (collectively, "Revvity") do not assume liability for the accuracy or completeness of the information contained herein. Users should exercise caution when handling materials as they may present unknown hazards. Revvity shall not be liable for any damages or losses resulting from handling or contact with the product, as Revvity cannot control actual methods, volumes, or conditions of use. Users are responsible for ensuring the product's suitability for their specific application. REVVITY EXPRESSLY DISCLAIMS ALL WARRANTIES, INCLUDING WARRANTIES OF MERCHANTABILITY OR FITNESS FOR A PARTICULAR PURPOSE, REGARDLESS OF WHETHER ORAL OR WRITTEN, EXPRESS OR IMPLIED, ALLEGEDLY ARISING FROM ANY USAGE OF ANY TRADE OR ANY COURSE OF DEALING, IN CONNECTION WITH THE USE OF INFORMATION CONTAINED HEREIN OR THE PRODUCT ITSELF"

