

AlphaLISA™ SureFire® Ultra™

Human AXIN-2 Total Detection Kit

Product number: ALSU-TAXIN2-A500, ALSU-TAXIN2-A10K,
 ALSU-TAXIN2-A50K, ALSU-TAXIN2-A-HV



Kit specificity:

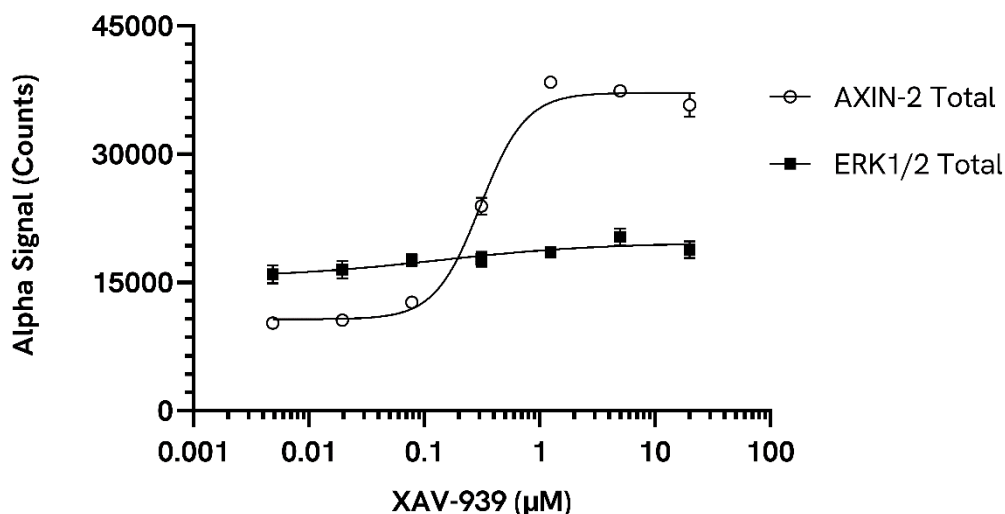
This assay kit contains antibodies which recognize distinct epitopes on AXIN-2. The protein detected by this kit corresponds to UniProt ID Q9Y2T1. AXIN-2 is also known as Axin-like protein (Axil), Axis inhibition protein 2 and Conductin. These antibodies recognize AXIN-2 of human origin. Other species should be tested on a case-by-case basis.

Control lysate information:

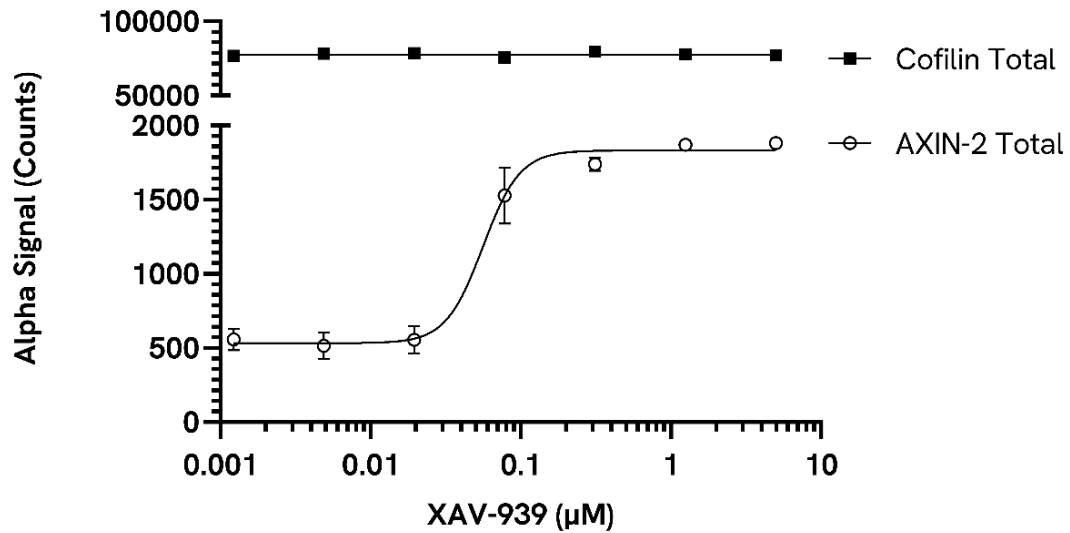
Positive Control Lysate: Prepared from SW 48 cells, cultured to confluence in T175 flasks in 10% FBS containing medium and lysed with 2.5 mL of Lysis Buffer.

Representative data:

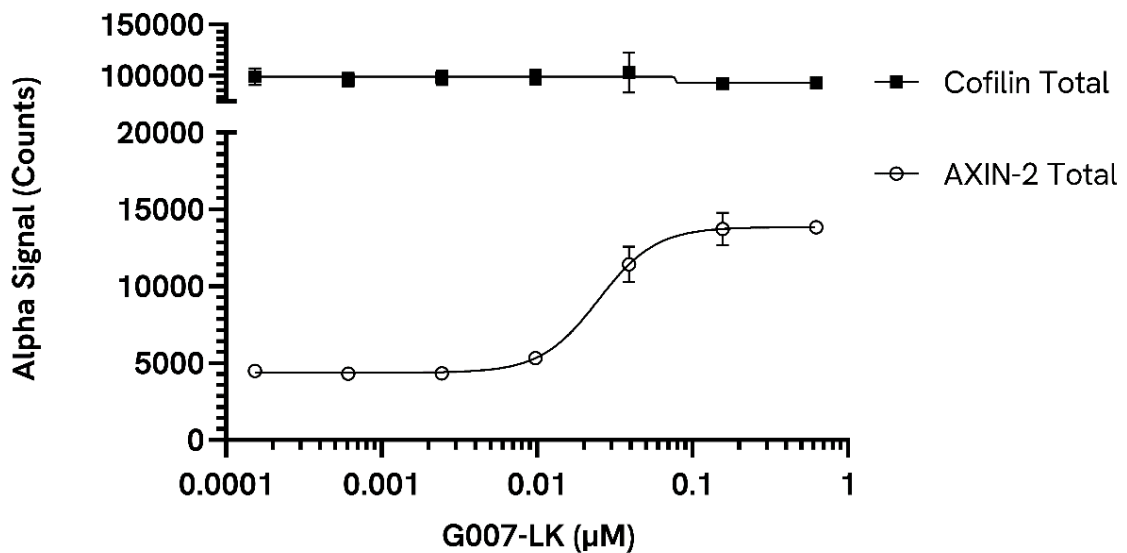
Data obtained using a 2-plate, 2-incubation protocol. SW 48 cells were seeded at 40K cells/well in a 96-well plate and incubated overnight. The cells were treated with a Tankyrase inhibitor (XAV-939) at the indicated concentrations for 24 hours. Cells were lysed with Lysis Buffer and assayed separately for AXIN-2 Total and ERK1/2 Total using respective SureFire Ultra kits. Equivalent to approximately 4,000 cells/datapoint.



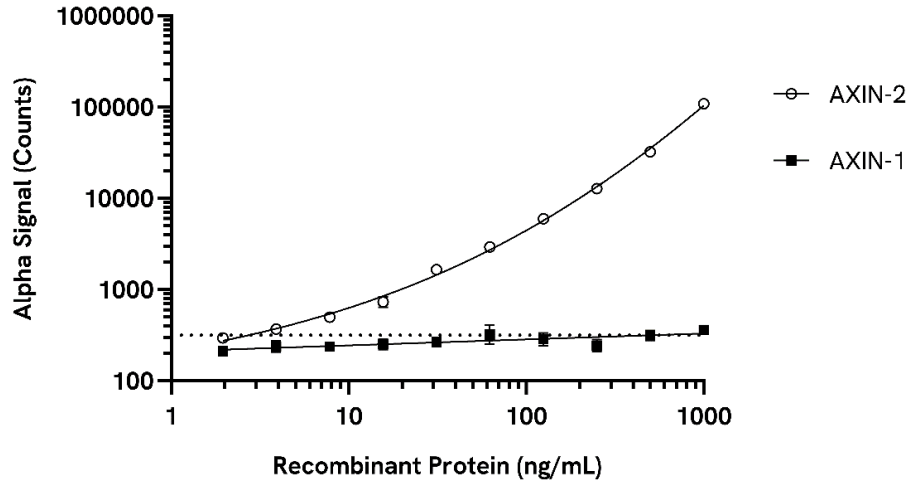
Data obtained using a 2-plate, 2-incubation protocol. MCF7 cells were seeded at 40K cells/well in a 96-well plate and incubated overnight. Cells were treated with XAV-939 at the indicated concentrations for 24 hours. Cells were lysed with Lysis Buffer and assayed separately for AXIN-2 Total and Cofilin Total using respective *SureFire Ultra* kits. Equivalent to approximately 4,000 cells/datapoint for AXIN-2 and 400 cells/datapoint for Cofilin.



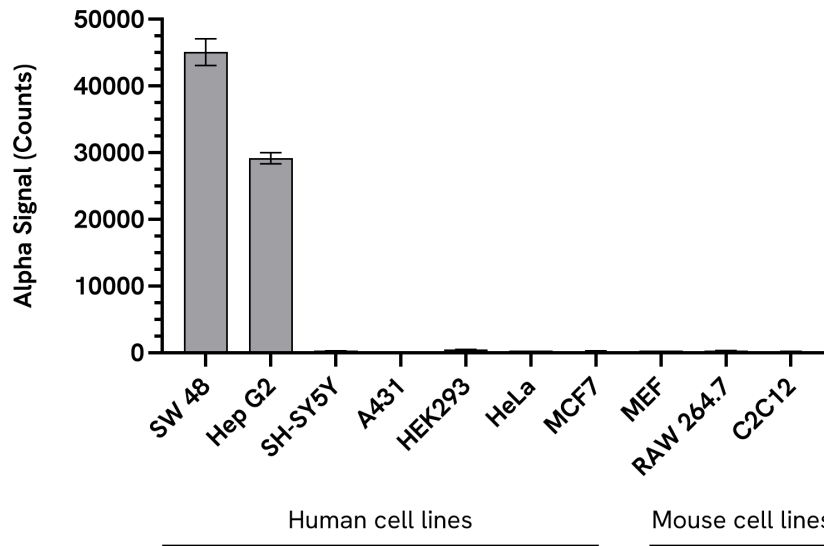
Data obtained using a 2-plate, 2-incubation protocol. SW 48 cells were seeded at 60K cells/well in a 96-well plate and incubated overnight. Cells were treated with a Tankyrase inhibitor (G007-LK) at the indicated concentrations for 24 hours. Cells were lysed with Lysis Buffer and assayed separately for AXIN-2 Total and Cofilin Total using respective *SureFire Ultra* kits. Equivalent to approximately 6,000 cells/datapoint for AXIN-2 and 600 cells/datapoint for Cofilin.



Recombinant human AXIN-1 (Abcam, ab204090) and AXIN-2 (Abcam, ab204097) proteins were serially diluted with Lysis Buffer and assayed for AXIN-2 Total using the *SureFire Ultra* kit. AXIN-2 Total assay reacts only to AXIN-2 recombinant protein with no cross-reactivity observed for AXIN-1 protein.



Human and mouse cell lines were seeded at 40K cells/well in a 96-well plate in complete medium and incubated overnight. Cells were lysed with Lysis Buffer and assayed for AXIN-2 Total using the *SureFire Ultra* kit. Equivalent to approximately 4,000 cells/datapoint.



The information provided in this document is for reference purposes only and may not be all-inclusive. Revvity, Inc., its subsidiaries, and/or affiliates (collectively, "Revvity") do not assume liability for the accuracy or completeness of the information contained herein. Users should exercise caution when handling materials as they may present unknown hazards. Revvity shall not be liable for any damages or losses resulting from handling or contact with the product, as Revvity cannot control actual methods, volumes, or conditions of use. Users are responsible for ensuring the product's suitability for their specific application. REVVITY EXPRESSLY DISCLAIMS ALL WARRANTIES, INCLUDING WARRANTIES OF MERCHANTABILITY OR FITNESS FOR A PARTICULAR PURPOSE, REGARDLESS OF WHETHER ORAL OR WRITTEN, EXPRESS OR IMPLIED, ALLEGEDLY ARISING FROM ANY USAGE OF ANY TRADE OR ANY COURSE OF DEALING, IN CONNECTION WITH THE USE OF INFORMATION CONTAINED HEREIN OR THE PRODUCT ITSELF"

