

AlphaLISA® SureFire® Ultra™

Human and Mouse p-Rb (Ser807/811) Detection Kit

Product number: ALSU-PRB-A500, ALSU-PRB-A10K,
ALSU-PRB-A50K, ALSU-PRB-A-HV



Kit specificity:

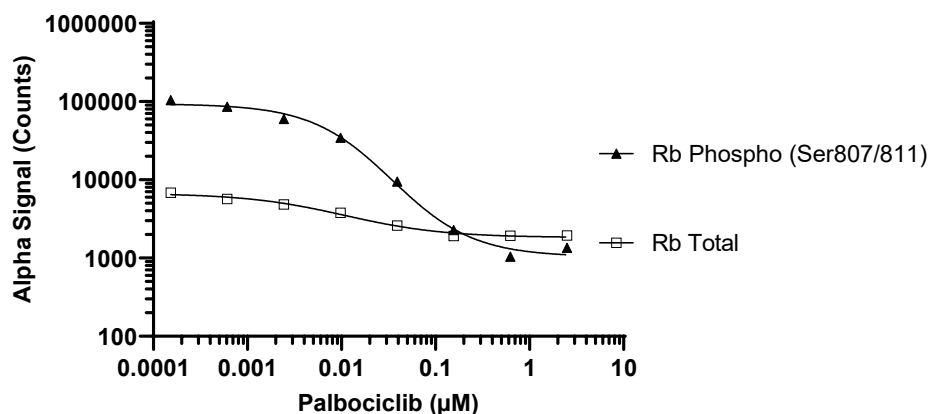
This assay kit contains antibodies which recognize the phospho-Ser807/811 epitope and a distal epitope on retinoblastoma tumor suppressor protein (Rb). The protein detected by this kit corresponds to UniProt ID P06400. Rb is also known as p105-Rb and p110-RB1. These antibodies recognize Rb of human and mouse origin. Other species should be tested on a case-by-case basis.

Control lysate information:

Positive Control Lysate: Prepared from Jurkat cells cultured in 10% FBS containing media. Cells were harvested and washed with HBSS + 0.1% BSA, adjusted to 4×10^6 cells/mL and lysed with the addition of 5X Lysis Buffer.

Representative data

Data obtained with a 2-plate, 2-incubation protocol. MCF7 cells were seeded at 40K cells/well in a 96 well plate and incubated overnight. Cells were treated with Palbociclib at the indicated concentrations for 24 hours. Cells were lysed with Lysis Buffer and assay separately for Phospho (Ser807/811) and Total Rb using respective SureFire Ultra kits. Equivalent to approximately 4,000 cells/datapoint.



The information provided in this document is for reference purposes only and may not be all-inclusive. Revvity, Inc., its subsidiaries, and/or affiliates (collectively, "Revvity") do not assume liability for the accuracy or completeness of the information contained herein. Users should exercise caution when handling materials as they may present unknown hazards. Revvity shall not be liable for any damages or losses resulting from handling or contact with the product, as Revvity cannot control actual methods, volumes, or conditions of use. Users are responsible for ensuring the product's suitability for their specific application. REVVITY EXPRESSLY DISCLAIMS ALL WARRANTIES, INCLUDING WARRANTIES OF MERCHANTABILITY OR FITNESS FOR A PARTICULAR PURPOSE, REGARDLESS OF WHETHER ORAL OR WRITTEN, EXPRESS OR IMPLIED, ALLEGEDLY ARISING FROM ANY USAGE OF ANY TRADE OR ANY COURSE OF DEALING, IN CONNECTION WITH THE USE OF INFORMATION CONTAINED HEREIN OR THE PRODUCT ITSELF"