

AlphaLISA® SureFire® Ultra™

Mouse RIP3 Total Detection Kit

Product number: ALSU-TRIP3-B500, ALSU-TRIP3-B10K,
 ALSU-TRIP3-B50K, ALSU-TRIP3-B-HV



Kit specificity:

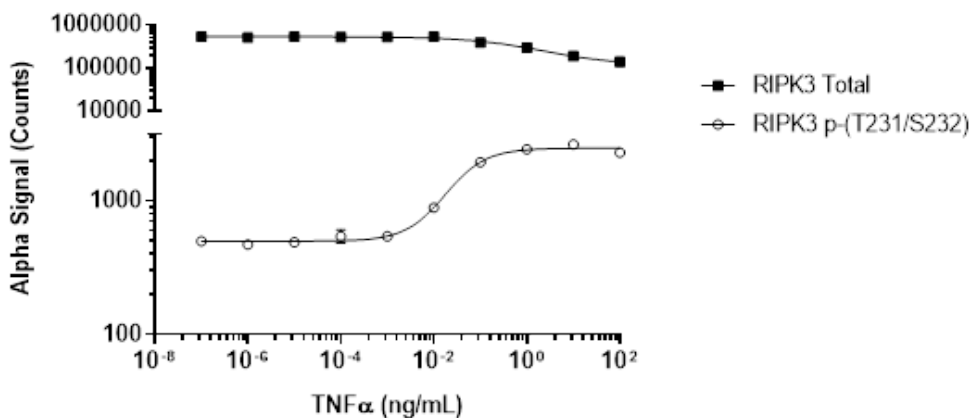
This assay kit contains antibodies which recognize distinct epitopes on RIP3. The protein detected by this kit corresponds to UniProt ID Q9QZL0. RIP3 is also known as RIP-like protein kinase 3 and Receptor-interacting protein 3. These antibodies recognize RIP3 of mouse origin. Other species should be tested on a case-by-case basis.

Control lysate information:

Positive Control Lysate: Prepared from L929 cells, cultured to confluence in T175 flasks in 10% FBS containing medium, then treated with 20 μM Z-VAD, 20 ng/mL TNFα and 200 nM SM-164 for 2 hours and lysed with 3 mL of Lysis Buffer.

Representative data

Data obtained with a 2-plate, 2-incubation protocol. L-929 cells were seeded at 40K cells/well in a 96 well plate and incubated overnight. Cells were treated with mTNFα at the indicated concentrations with 20 μM Z-VAD and 200 nM SM-164 for 2 hours. Cells were lysed with Lysis Buffer and assayed separately for Phospho (Thr231/Ser232) and Total RIP3 using respective SureFire Ultra kits. Equivalent to approximately 4,000 cells/datapoint.



The information provided in this document is for reference purposes only and may not be all-inclusive. Revvity, Inc., its subsidiaries, and/or affiliates (collectively, "Revvity") do not assume liability for the accuracy or completeness of the information contained herein. Users should exercise caution when handling materials as they may present unknown hazards. Revvity shall not be liable for any damages or losses resulting from handling or contact with the product, as Revvity cannot control actual methods, volumes, or conditions of use. Users are responsible for ensuring the product's suitability for their specific application. REVVITY EXPRESSLY DISCLAIMS ALL WARRANTIES, INCLUDING WARRANTIES OF MERCHANTABILITY OR FITNESS FOR A PARTICULAR PURPOSE, REGARDLESS OF WHETHER ORAL OR WRITTEN, EXPRESS OR IMPLIED, ALLEGEDLY ARISING FROM ANY USAGE OF ANY TRADE OR ANY COURSE OF DEALING, IN CONNECTION WITH THE USE OF INFORMATION CONTAINED HEREIN OR THE PRODUCT ITSELF"