

AlphaLISA® SureFire® Ultra™ Terbium

# Human and Mouse p-SMAD3 (Ser423/425) Detection Kit

**Product number:** TBSU-PSM3-A500, TBSU-PSM3-A10K  
TBSU-PSM3-A50K, TBSU-PSM3-A-HV



## Kit specificity:

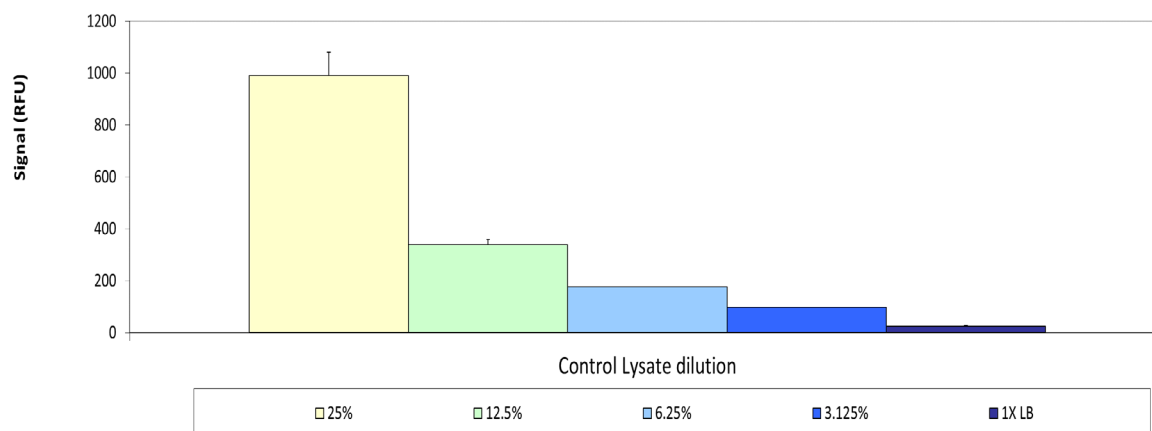
This assay kit contains antibodies which recognize the phospho-Ser423/425 epitope and a distal epitope on SMAD3. The protein detected by this kit corresponds to UniProt ID P84022. SMAD3 is also known as Mothers against decapentaplegic homolog 3, JV15-2 and MAD homolog 3. These antibodies recognize SMAD3 of human and mouse origin. Other species should be tested on a case-by-case basis.

## Control lysate information:

Positive Control Lysate: Prepared from RAW 264.7 cells cultured to confluence in T175 flasks in 10% FBS containing medium, treated with 10 ng/mL rh-TGF- $\beta$  for 90 minutes and lysed with 6 mL of Lysis Buffer.

## Representative data

Data obtained from the positive control lysate diluted in Lysis Buffer. Samples were assayed for Phospho SMAD3 (Ser423/425) using the Terbium SureFire Ultra kit.



The information provided in this document is for reference purposes only and may not be all-inclusive. Revvity, Inc., its subsidiaries, and/or affiliates (collectively, "Revvity") do not assume liability for the accuracy or completeness of the information contained herein. Users should exercise caution when handling materials as they may present unknown hazards. Revvity shall not be liable for any damages or losses resulting from handling or contact with the product, as Revvity cannot control actual methods, volumes, or conditions of use. Users are responsible for ensuring the product's suitability for their specific application. REVVITY EXPRESSLY DISCLAIMS ALL WARRANTIES, INCLUDING WARRANTIES OF MERCHANTABILITY OR FITNESS FOR A PARTICULAR PURPOSE, REGARDLESS OF WHETHER ORAL OR WRITTEN, EXPRESS OR IMPLIED, ALLEGEDLY ARISING FROM ANY USAGE OF ANY TRADE OR ANY COURSE OF DEALING, IN CONNECTION WITH THE USE OF INFORMATION CONTAINED HEREIN OR THE PRODUCT ITSELF"