

AlphaLISA® SureFire® Ultra™

Human and Mouse SLP-76 Total Detection Kit

Product number: ALSU-TSLP-B500, ALSU-TSLP-B10K,
 ALSU-TSLP-B50K, ALSU-TSLP-B-HV



Kit specificity:

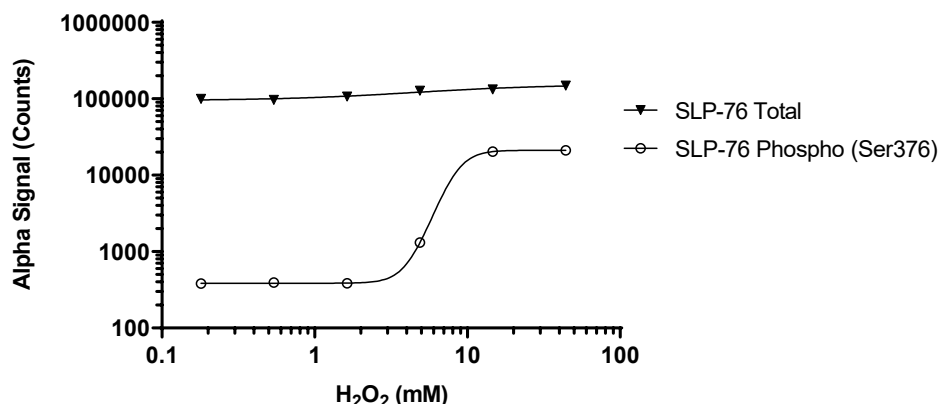
This assay kit contains antibodies which recognize distinct epitopes on SLP-76. The protein detected by this kit corresponds to UniProt ID Q13094. SLP-76 is also known as Lymphocyte cytosolic protein 2 and SH2 domain-containing leukocyte protein of 76 kDa. These antibodies recognize SLP-76 of human and mouse origin. Other species should be tested on a case-by-case basis.

Control lysate information:

Positive Control Lysate: Prepared from RAW 264.7 cells, cultured to confluence in T175 flasks in 10% FBS containing medium, then treated with 11 mM H₂O₂ and 50 nM Calyculin A for 10 minutes and lysed with 5 mL of Lysis Buffer.

Representative data

Data obtained with a 2-plate, 2-incubation protocol. RAW 264.7 cells were seeded at 20K cells/well in a 96 well plate and incubated for 48 hours. Cells were treated with H₂O₂ at the indicated concentrations for 10 minutes. Cells were lysed with Lysis Buffer and assayed separately for Phospho (Ser376) and Total SLP-76 using respective SureFire Ultra kits. Equivalent to approximately 4,000 cells/datapoint.



The information provided in this document is for reference purposes only and may not be all-inclusive. Revvity, Inc., its subsidiaries, and/or affiliates (collectively, "Revvity") do not assume liability for the accuracy or completeness of the information contained herein. Users should exercise caution when handling materials as they may present unknown hazards. Revvity shall not be liable for any damages or losses resulting from handling or contact with the product, as Revvity cannot control actual methods, volumes, or conditions of use. Users are responsible for ensuring the product's suitability for their specific application. REVVITY EXPRESSLY DISCLAIMS ALL WARRANTIES, INCLUDING WARRANTIES OF MERCHANTABILITY OR FITNESS FOR A PARTICULAR PURPOSE, REGARDLESS OF WHETHER ORAL OR WRITTEN, EXPRESS OR IMPLIED, ALLEGEDLY ARISING FROM ANY USAGE OF ANY TRADE OR ANY COURSE OF DEALING, IN CONNECTION WITH THE USE OF INFORMATION CONTAINED HEREIN OR THE PRODUCT ITSELF"