

AlphaLISA® SureFire® Ultra™

# Human and Mouse Ras Total Detection Kit

**Product number:** ALSU-TRAS-A500, ALSU-TRAS-A10K,  
ALSU-TRAS-A50K, ALSU-TRAS-A-HV



### Kit specificity:

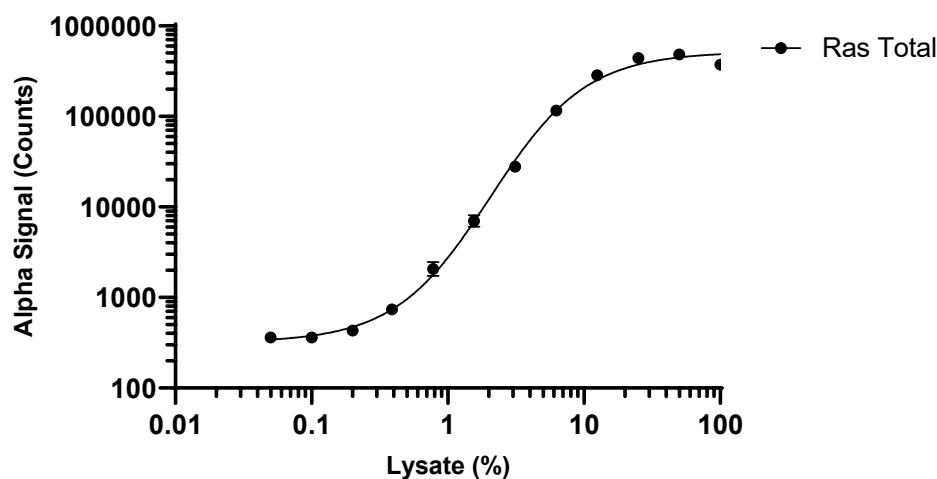
This assay kit contains antibodies which recognize invariant epitopes on Ras. The protein detected by this kit corresponds to UniProt ID P01116 (K-Ras), P01112 (H-Ras) and P01111 (N-Ras). These antibodies recognize Ras of human and mouse origin. Other species should be tested on a case-by-case basis.

### Control lysate information:

Positive Control Lysate: Prepared from A-431 cells, cultured to 85% confluence in T175 flasks in 10% FBS containing media and lysed with 8 mL of Lysis Buffer.

### Representative data

Data obtained with a 2-plate, 2-incubation protocol. A431 Positive Control Lysate was serially diluted in 1x Lysis Buffer and assayed for Total Ras using the *SureFire Ultra* kit. 100% lysate is equivalent to approximately 6,000 cells/datapoint.



The information provided in this document is for reference purposes only and may not be all-inclusive. Revvity, Inc., its subsidiaries, and/or affiliates (collectively, "Revvity") do not assume liability for the accuracy or completeness of the information contained herein. Users should exercise caution when handling materials as they may present unknown hazards. Revvity shall not be liable for any damages or losses resulting from handling or contact with the product, as Revvity cannot control actual methods, volumes, or conditions of use. Users are responsible for ensuring the product's suitability for their specific application. REVVITY EXPRESSLY DISCLAIMS ALL WARRANTIES, INCLUDING WARRANTIES OF MERCHANTABILITY OR FITNESS FOR A PARTICULAR PURPOSE, REGARDLESS OF WHETHER ORAL OR WRITTEN, EXPRESS OR IMPLIED, ALLEGEDLY ARISING FROM ANY USAGE OF ANY TRADE OR ANY COURSE OF DEALING, IN CONNECTION WITH THE USE OF INFORMATION CONTAINED HEREIN OR THE PRODUCT ITSELF"