

AlphaLISA® SureFire® Ultra™

## Human and Mouse p-IκBα (Ser32/36) Detection Kit

**Product number:** ALSU-PIKBA-A500, ALSU-PIKBA-A10K,  
ALSU-PIKBA-A50K, ALSU-PIKBA-A-HV



### Kit specificity:

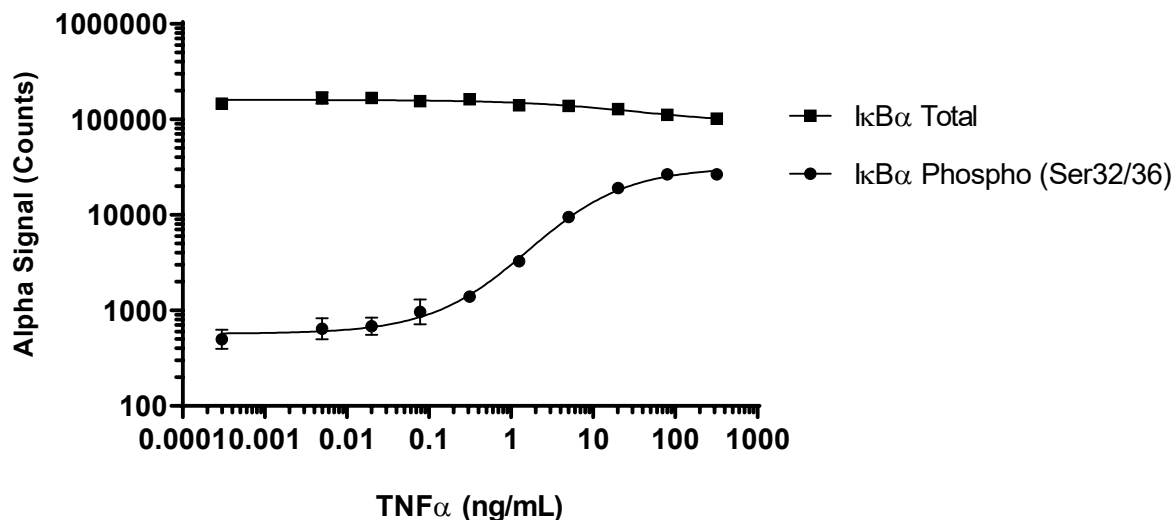
This assay kit contains antibodies which recognize the phospho-Ser32/36 epitope and a distal epitope on IκBα. The protein detected by this kit corresponds to UniProt ID P25963. IκBα is also known as NF-kappa-B inhibitor alpha and NFKBIA. These antibodies recognize IκBα of human and mouse origin. Other species should be tested on a case-by-case basis.

### Control lysate information:

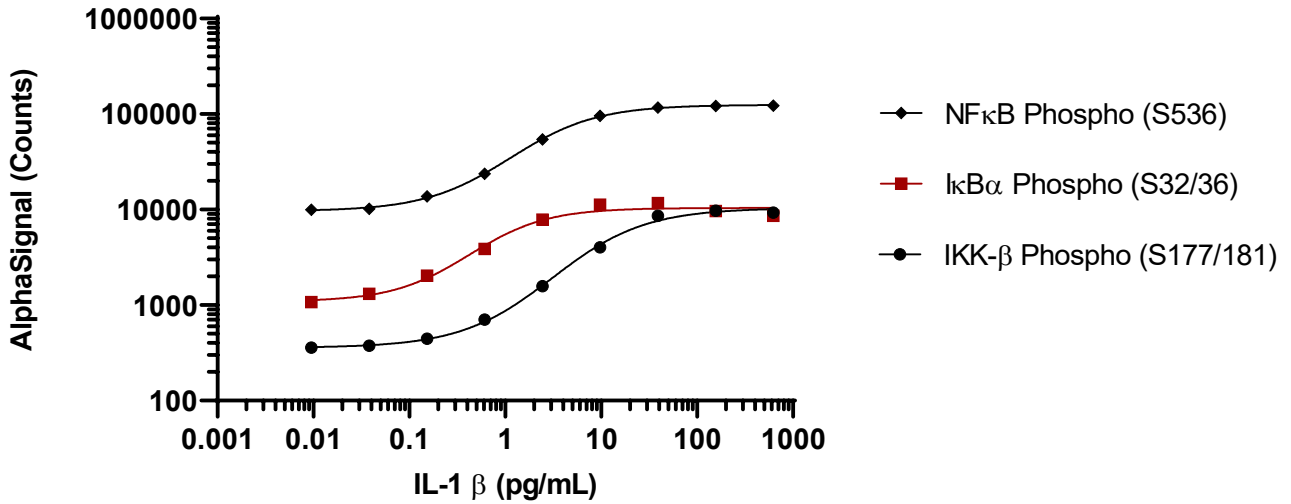
Positive Control Lysate: Prepared from HeLa cells, cultured to confluence in T175 flasks in 10% FBS containing medium. Cells were treated with 50 ng/mL TNFα and 20 ng/mL Calyculin A for 5 minutes and lysed in 5 mL of Lysis Buffer.

### Representative data

Data obtained with a 2-plate, 2-incubation protocol. HeLa cells were seeded at 40K cells per well in a 96 well plate and incubated overnight. Cells were treated with 20 ng/mL Calyculin A and TNFα at the indicated concentrations for 5 minutes. Cells were lysed with Lysis Buffer and assayed for Phospho (Ser32/36) or Total IκBα using respective SureFire Ultra kits. Equivalent to approximately 4,000 cells/datapoint.



Data obtained with a 2-plate, 2-incubation protocol. Karpas 299 cells were washed with HBSS + 0.1% BSA and seeded at 300K cells per well in a 96 well plate. Cells were treated with IL-1 $\beta$  at the indicated concentrations for 10 minutes. Cells were lysed with 5x Lysis Buffer and assayed for various targets using respective *SureFire Ultra* kits. Equivalent to approximately 12,000 cells/datapoint (2,400 cells for NF $\kappa$ B).



The information provided in this document is for reference purposes only and may not be all-inclusive. Revvity, Inc., its subsidiaries, and/or affiliates (collectively, “Revvity”) do not assume liability for the accuracy or completeness of the information contained herein. Users should exercise caution when handling materials as they may present unknown hazards. Revvity shall not be liable for any damages or losses resulting from handling or contact with the product, as Revvity cannot control actual methods, volumes, or conditions of use. Users are responsible for ensuring the product’s suitability for their specific application. REVVITY EXPRESSLY DISCLAIMS ALL WARRANTIES, INCLUDING WARRANTIES OF MERCHANTABILITY OR FITNESS FOR A PARTICULAR PURPOSE, REGARDLESS OF WHETHER ORAL OR WRITTEN, EXPRESS OR IMPLIED, ALLEGEDLY ARISING FROM ANY USAGE OF ANY TRADE OR ANY COURSE OF DEALING, IN CONNECTION WITH THE USE OF INFORMATION CONTAINED HEREIN OR THE PRODUCT ITSELF”

