

AlphaLISA® SureFire® Ultra™

Human and Mouse CDK8 Total Detection Kit

Product number: ALSU-TCDK8-A500, ALSU-TCDK8-A10K,
ALSU-TCDK8-A50K, ALSU-TCDK8-A-HV



Kit specificity:

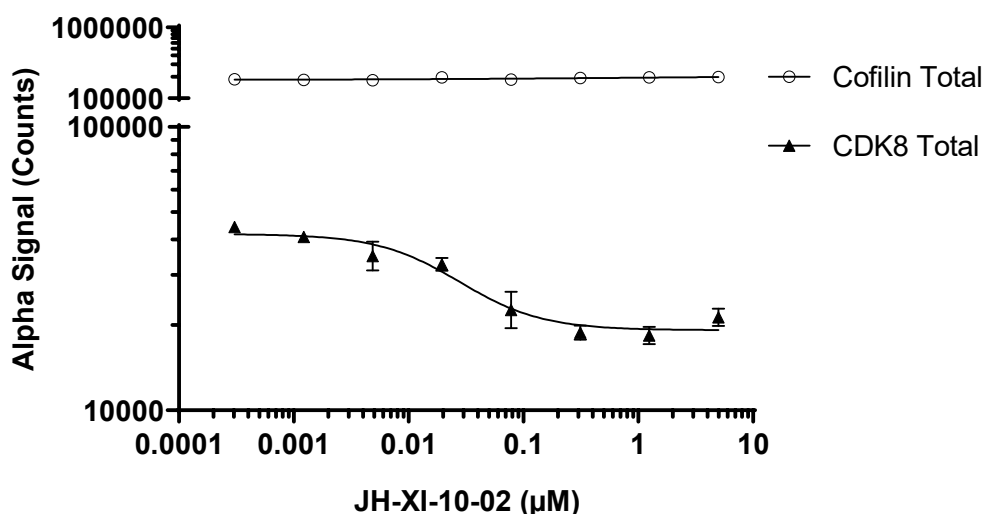
This assay kit contains antibodies which recognize distinct epitopes on CDK8. The protein detected by this kit corresponds to UniProt ID P49336. CDK8 is also known as Cyclin-dependent kinase 8 and Protein kinase K35. These antibodies recognize CDK8 of human and mouse origin. Other species should be tested on a case-by case basis.

Control lysate information:

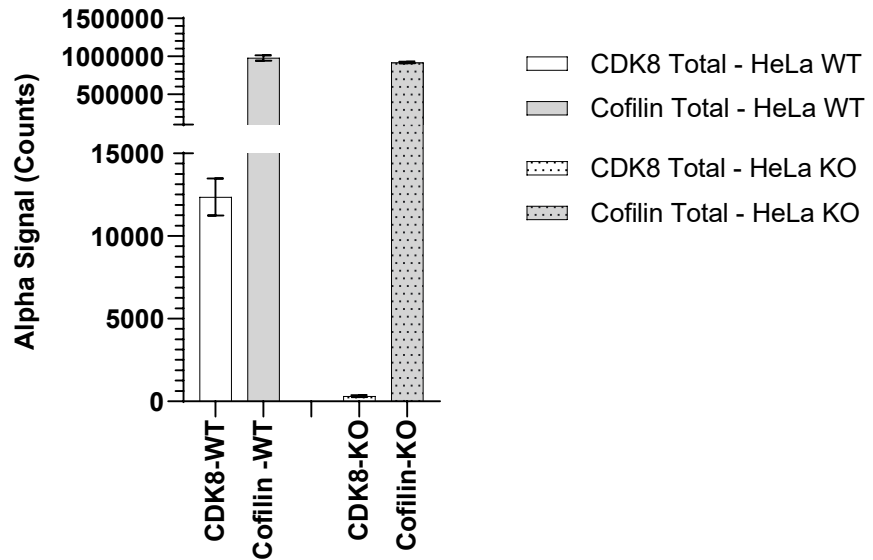
Positive Control Lysate: Prepared from HeLa cells cultured to confluence in T175 flasks in 10% FBS containing medium and lysed with 4 mL of Lysis Buffer.

Representative data

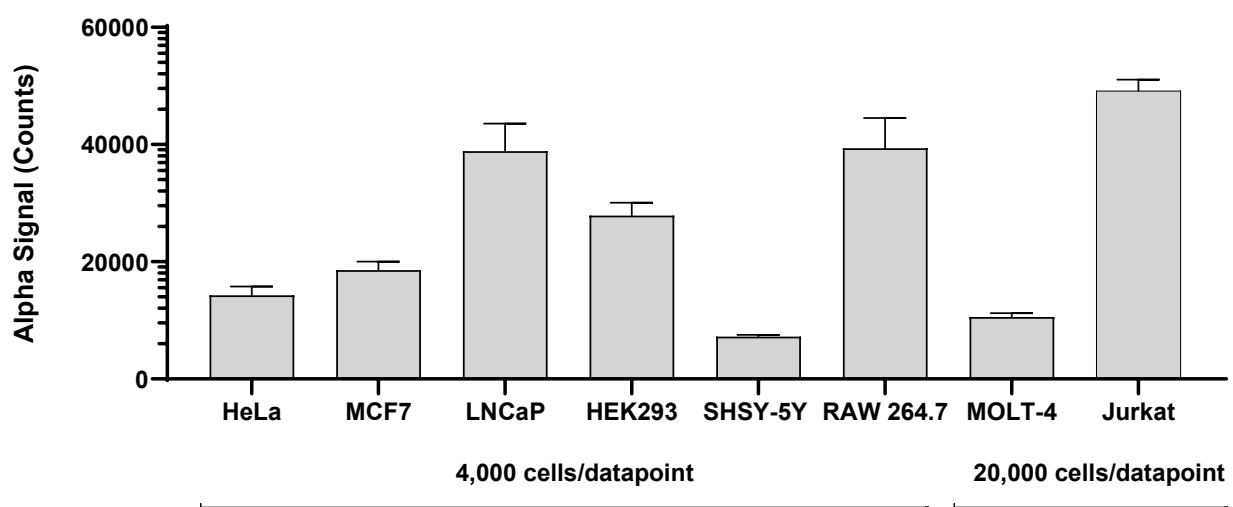
Data obtained with a 2-plate, 2-incubation protocol. Jurkat cells were seeded at 200K cells/well in a 96 well plate in complete medium. Cells were treated with JH-XI-10-02 (CDK8 PROTAC) at the indicated concentrations for 24 hours. Cells were spun down at 300 RCF for 5 minutes, washed with HBSS, lysed with Lysis Buffer and assayed separately for CDK8 and Cofilin Total using respective *SureFire Ultra* kits. Equivalent to approximately 20,000 cells/datapoint (400 cells for Cofilin Total).



HeLa CDK8-WT and HeLa CDK8-KO cells were grown to confluence in a T75 flask in 10% FBS containing medium. Cells were lysed with Lysis Buffer and assayed separately for CDK8 and Cofilin Total using respective *SureFire Ultra* kits. Equivalent to approximately 12,500 cells/datapoint.



Data obtained from measurement of CDK8 Total in various cell lines lysed with Lysis Buffer. Approximate number of cells/datapoint is indicated.



The information provided in this document is for reference purposes only and may not be all-inclusive. Revvity, Inc., its subsidiaries, and/or affiliates (collectively, "Revvity") do not assume liability for the accuracy or completeness of the information contained herein. Users should exercise caution when handling materials as they may present unknown hazards. Revvity shall not be liable for any damages or losses resulting from handling or contact with the product, as Revvity cannot control actual methods, volumes, or conditions of use. Users are responsible for ensuring the product's suitability for their specific application. REVVITY EXPRESSLY DISCLAIMS ALL WARRANTIES, INCLUDING WARRANTIES OF MERCHANTABILITY OR FITNESS FOR A PARTICULAR PURPOSE, REGARDLESS OF WHETHER ORAL OR WRITTEN, EXPRESS OR IMPLIED, ALLEGEDLY ARISING FROM ANY USAGE OF ANY TRADE OR ANY COURSE OF DEALING, IN CONNECTION WITH THE USE OF INFORMATION CONTAINED HEREIN OR THE PRODUCT ITSELF"

