

AlphaLISA® SureFire® Ultra™

## Human and Mouse p-ATG16L1 (Ser278) Detection Kit

**Product number:** ALSU-PATG-A500, ALSU-PATG-A10K,  
ALSU-PATG-A50K, ALSU-PATG-A-HV



### Kit specificity:

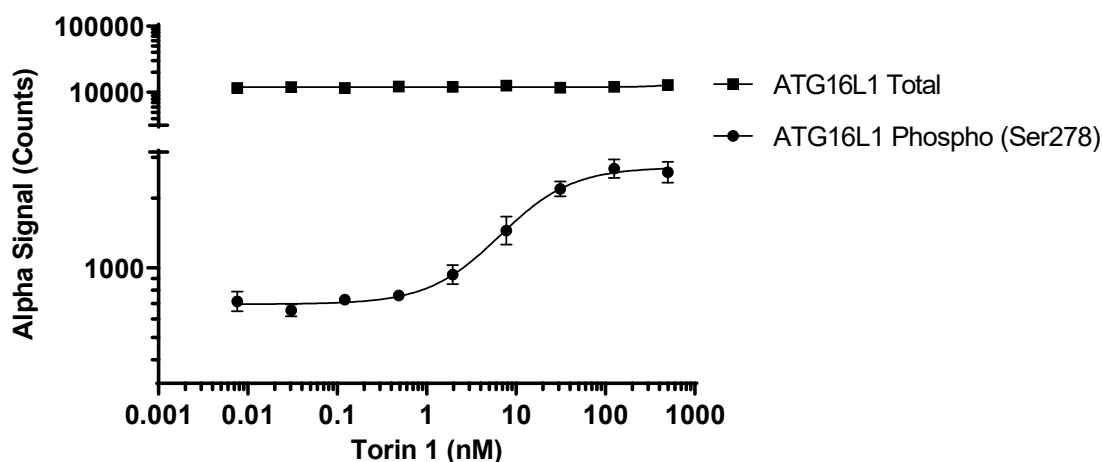
This assay kit contains antibodies which recognize the phospho-Ser278 epitope and a distal epitope on ATG16L1. The protein detected by this kit corresponds to UniProt ID Q676U5. ATG16L1 is also known as ATG16Land ATG16A. These antibodies recognize ATG16L1 of human and mouse origin. Other species should be tested on a case-by-case basis.

### Control lysate information:

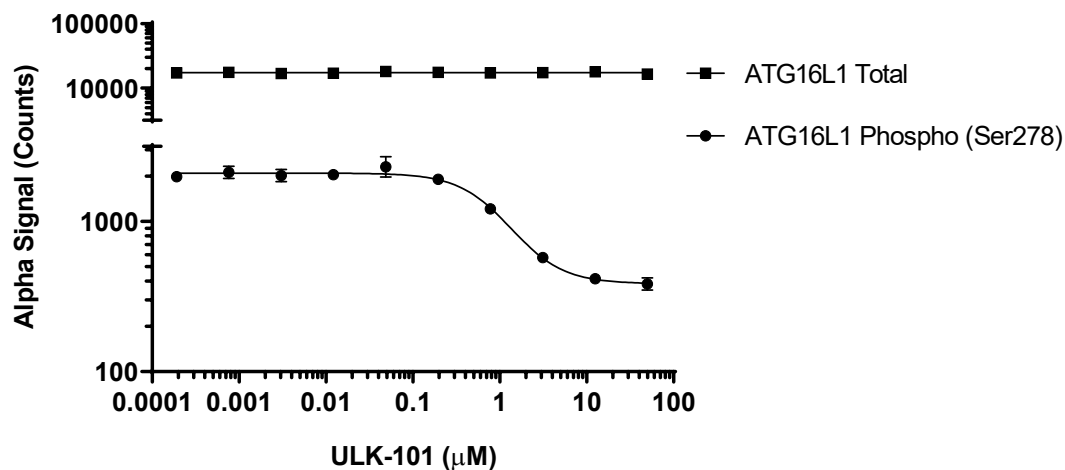
Positive Control Lysate: Prepared from PC-3 cells, cultured to confluence in T175 flasks in 10% FBS containing media, then treated with 200 nM Torin for 3 hours. Cells were lysed with 2 mL of Lysis Buffer.

### Representative data

Data obtained with a 2-plate, 2-incubation protocol. PC-3 cells were seeded at 40K cells/ well in a 96 well plate and incubated overnight. Cells were treated with Torin 1 at the indicated concentrations for 2 hours. Cells were washed with DPBS, lysed with Lysis Buffer and assayed separately for Phospho (Ser278) and Total ATG16L1 using respective *SureFire Ultra* kits. Equivalent to approximately 8,000 cells/datapoint. Nb: Endogenous Phospho ATG16L1 levels were low and assay signals could be improved with a 2 x 2 h assay (std 2 x 1 h data below).



Data obtained with a 2-plate, 2-incubation protocol. SH-SY5Y cells seeded at 60K cells/well in a 96 well plate and incubated overnight. Cells were treated with 125 nM Torin 1 and ULK-101 inhibitor at the indicated concentrations for 3 hours. Cells were lysed with Lysis Buffer and assayed separately for Phospho (Ser278) and Total ATG16L1 using respective *SureFire Ultra* kits. Equivalent to approximately 12,000 cells/datapoint.



The information provided in this document is for reference purposes only and may not be all-inclusive. Revvity, Inc., its subsidiaries, and/or affiliates (collectively, "Revvity") do not assume liability for the accuracy or completeness of the information contained herein. Users should exercise caution when handling materials as they may present unknown hazards. Revvity shall not be liable for any damages or losses resulting from handling or contact with the product, as Revvity cannot control actual methods, volumes, or conditions of use. Users are responsible for ensuring the product's suitability for their specific application. REVVITY EXPRESSLY DISCLAIMS ALL WARRANTIES, INCLUDING WARRANTIES OF MERCHANTABILITY OR FITNESS FOR A PARTICULAR PURPOSE, REGARDLESS OF WHETHER ORAL OR WRITTEN, EXPRESS OR IMPLIED, ALLEGEDLY ARISING FROM ANY USAGE OF ANY TRADE OR ANY COURSE OF DEALING, IN CONNECTION WITH THE USE OF INFORMATION CONTAINED HEREIN OR THE PRODUCT ITSELF"

