

AlphaLISA® SureFire® Ultra™

## Human p-RAB29 (Ser72) Detection Kit

**Product number:** ALSU-PRAB29-A500, ALSU-PRAB29-A10K,  
ALSU-PRAB29-A50K ALSU-PRAB29-A-HV



### Kit specificity:

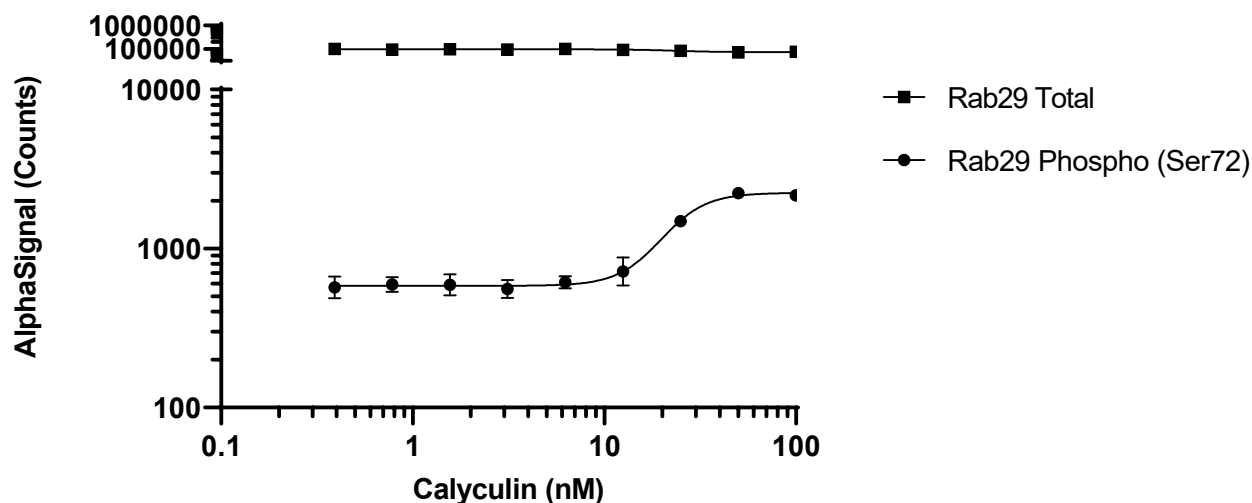
This assay contains antibodies which recognize the phospho Ser72 epitope and a distal epitope on RAB29. The protein detected by this kit corresponds to UniProt ID O14966. RAB29 is also known as Ras-related protein Rab-7L1. These antibodies recognize RAB29 of human origin. Other species should be tested on a case-by-case basis.

### Control lysate information:

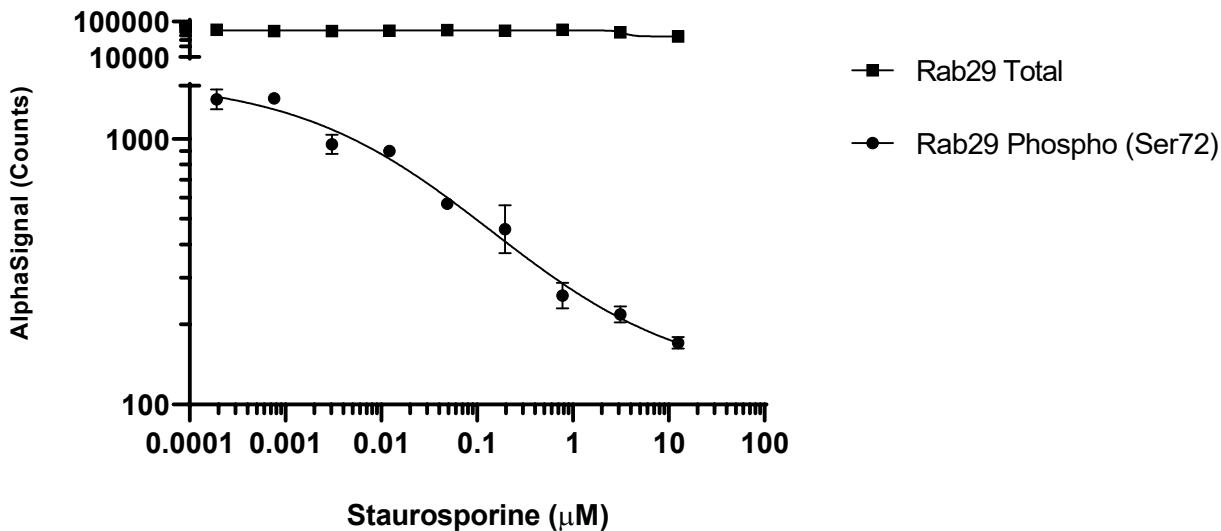
Positive Control Lysate: Prepared from THP-1 cells seeded at 500K/mL in fresh medium for 24 hours. Cells were treated with 100 ng/mL Calyculin for 2 hours. Cells were spun down at 300 RCF for 5 minutes, washed with HBSS and lysed with Lysis Buffer at  $10 \times 10^6$  cells/mL.

### Representative data

Data obtained with a 2-plate, 2-incubation protocol. THP1 cells were seeded at 500K/mL in fresh medium for 24 hours. Cells were harvested, adjusted to  $10 \times 10^6$  cells/mL. Cells were treated with Calyculin at the indicated concentrations for 2 hours. Plates were spun at 300 RCF, cells were washed with HBSS and lysed with Lysis Buffer and assayed separately for Phospho (Ser72) and Total RAB29 using respective *SureFire Ultra* kits. Equivalent to approximately  $1 \times 10^6$  cells/datapoint.



Data obtained with a 2-plate, 2-incubation protocol. THP1 cells were seeded at 500K/mL in fresh medium for 24 hours. Cells were harvested, adjusted to  $10 \times 10^6$  cells/mL and plated in a round bottom 96 well plate. Cells were treated with Staurosporine at the indicated concentrations with 500  $\mu\text{g/mL}$  Chloroquine for 2 hours. Plates were spun at 300 RCF, cells were washed with HBSS, lysed with Lysis Buffer and assayed separately for Phospho (Ser72) and Total Rab29 using respective *SureFire Ultra* kits. Equivalent to approximately  $1 \times 10^6$  cells/datapoint.



The information provided in this document is for reference purposes only and may not be all-inclusive. Revvity, Inc., its subsidiaries, and/or affiliates (collectively, "Revvity") do not assume liability for the accuracy or completeness of the information contained herein. Users should exercise caution when handling materials as they may present unknown hazards. Revvity shall not be liable for any damages or losses resulting from handling or contact with the product, as Revvity cannot control actual methods, volumes, or conditions of use. Users are responsible for ensuring the product's suitability for their specific application. REVVITY EXPRESSLY DISCLAIMS ALL WARRANTIES, INCLUDING WARRANTIES OF MERCHANTABILITY OR FITNESS FOR A PARTICULAR PURPOSE, REGARDLESS OF WHETHER ORAL OR WRITTEN, EXPRESS OR IMPLIED, ALLEGEDLY ARISING FROM ANY USAGE OF ANY TRADE OR ANY COURSE OF DEALING, IN CONNECTION WITH THE USE OF INFORMATION CONTAINED HEREIN OR THE PRODUCT ITSELF"



Revvity, Inc.  
940 Winter Street  
Waltham, MA 02451 USA

(800) 762-4000  
www.revvity.com

For a complete listing of our global offices, visit [www.revvity.com](http://www.revvity.com)  
Copyright ©2023, Revvity, Inc. All rights reserved.