

AlphaLISA® SureFire® Ultra™

## Human PLC $\gamma$ 2 Total Detection Kit

**Product number:** ALSU-TPLCG2-A500, ALSU-TPLCG2-A10K,  
ALSU-TPLCG2-A50K, ALSU-TPLCG2-A-HV



### Kit specificity:

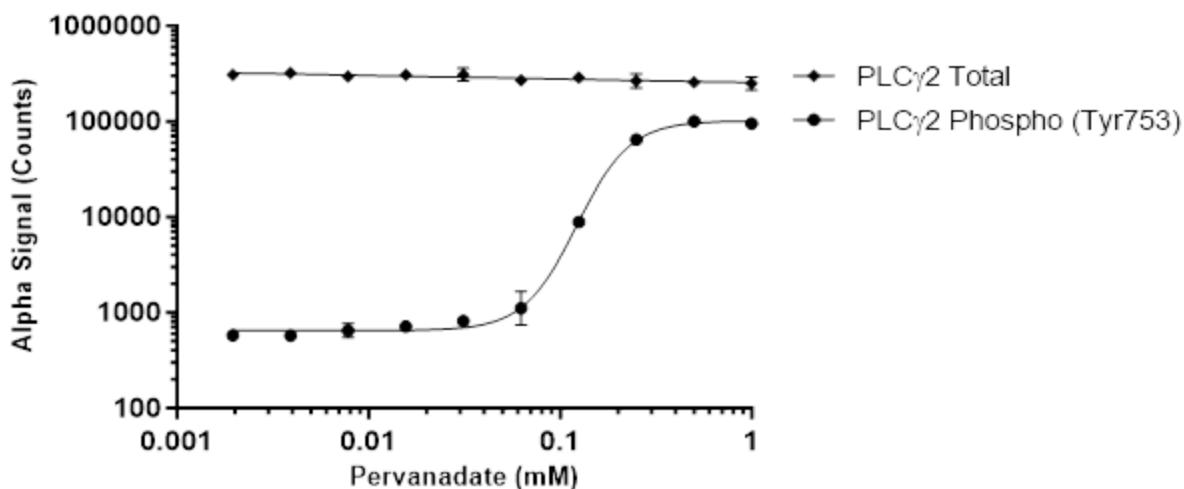
This assay kit contains antibodies which recognize distinct epitopes on PLC $\gamma$ 2. The protein detected by this kit corresponds to UniProt ID P16885. These antibodies recognize PLC $\gamma$ 2 of human origin. Other species should be tested on a case-by-case basis.

### Control lysate information:

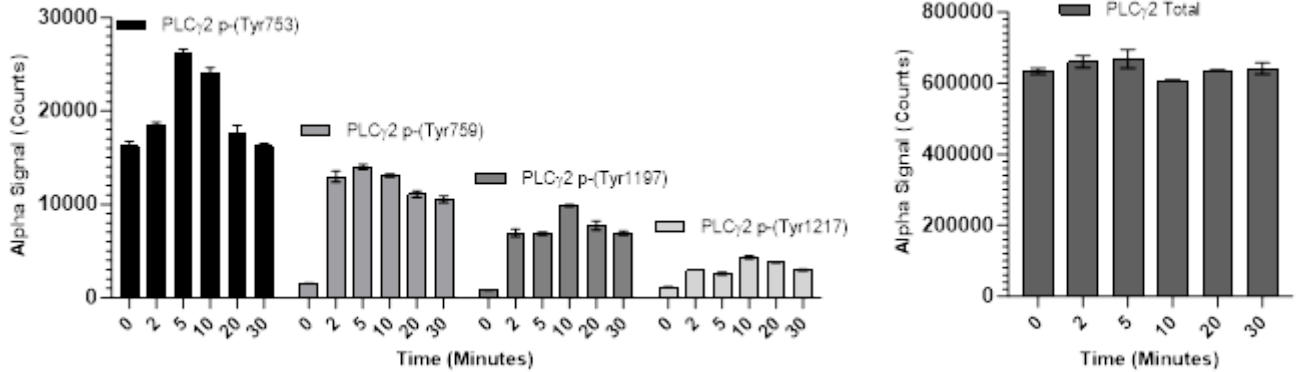
Positive Control Lysate: Prepared from THP-1 cells cultured in 10% FBS containing media. Cells were harvested and washed with HBSS + 0.1% BSA, adjusted to  $4 \times 10^6$  cells/mL and then treated with 0.25 nM Pervanadate for 30 minutes. Cells were then lysed with the addition of 5X Lysis Buffer.

### Representative data

Data obtained with a 2-plate, 2-incubation protocol. THP-1 cells were seeded at 80K cells/well in a 96 well plate in HBSS + 0.1% BSA. Cells were treated with Pervanadate at the indicated concentrations for 30 minutes. Cells were lysed with 5X Lysis Buffer and assayed for Phospho (Tyr753) and Total PLC $\gamma$ 2 using respective *SureFire Ultra* kits. Equivalent to approximately 3,200 cells/datapoint.



Data obtained with a 2-plate, 2-incubation protocol. Ramos cells were harvested and seeded at 600K cells/well in a 96 well plate in HBSS + 0.1% BSA. Cells were treated with 25 µg/mL of Anti IgM antibody for 0, 2, 5, 10, 20 & 30 minutes. Cells were then lysed with 5X Lysis buffer and assayed for Phospho (Tyr753, Tyr759, Tyr1197, Tyr1217) and Total PLCγ2 in separate wells of an assay plate with respective *SureFire Ultra* kits. Equivalent to approximately 24,000 cells/datapoint.



The information provided in this document is for reference purposes only and may not be all-inclusive. Revvity, Inc., its subsidiaries, and/or affiliates (collectively, "Revvity") do not assume liability for the accuracy or completeness of the information contained herein. Users should exercise caution when handling materials as they may present unknown hazards. Revvity shall not be liable for any damages or losses resulting from handling or contact with the product, as Revvity cannot control actual methods, volumes, or conditions of use. Users are responsible for ensuring the product's suitability for their specific application. REVVITY EXPRESSLY DISCLAIMS ALL WARRANTIES, INCLUDING WARRANTIES OF MERCHANTABILITY OR FITNESS FOR A PARTICULAR PURPOSE, REGARDLESS OF WHETHER ORAL OR WRITTEN, EXPRESS OR IMPLIED, ALLEGEDLY ARISING FROM ANY USAGE OF ANY TRADE OR ANY COURSE OF DEALING, IN CONNECTION WITH THE USE OF INFORMATION CONTAINED HEREIN OR THE PRODUCT ITSELF"

