

AlphaLISA® SureFire® Ultra™

Human p-Lamin A/C (Ser22) Detection Kit

Product number: ALSU-PLAM-A500, ALSU-PLAM-A10K,
ALSU-PLAM-A50K, ALSU-PLAM-A-HV



Kit specificity:

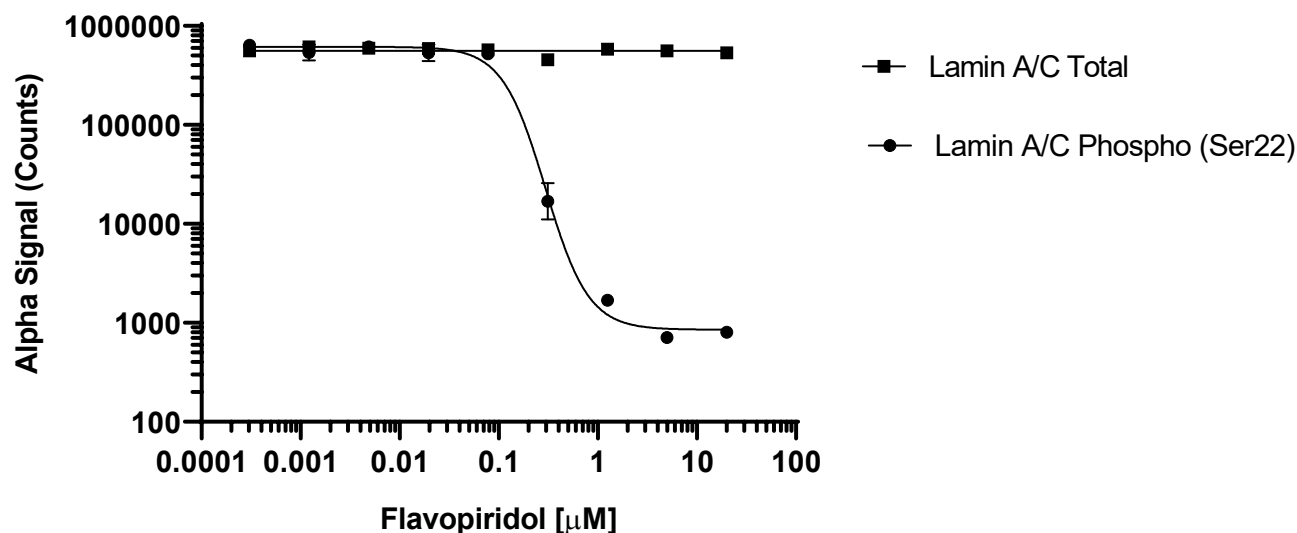
This assay kit contains antibodies which recognize the phospho-Ser22 epitope and a distal epitope on Lamin A/C. The protein detected by this kit corresponds to UniProt ID P02545. Lamin A/C is also known as Prelamin-A/C and LMNA. These antibodies recognize Lamin A/C of human origin. Other species should be tested on a case-by-case basis.

Control lysate information:

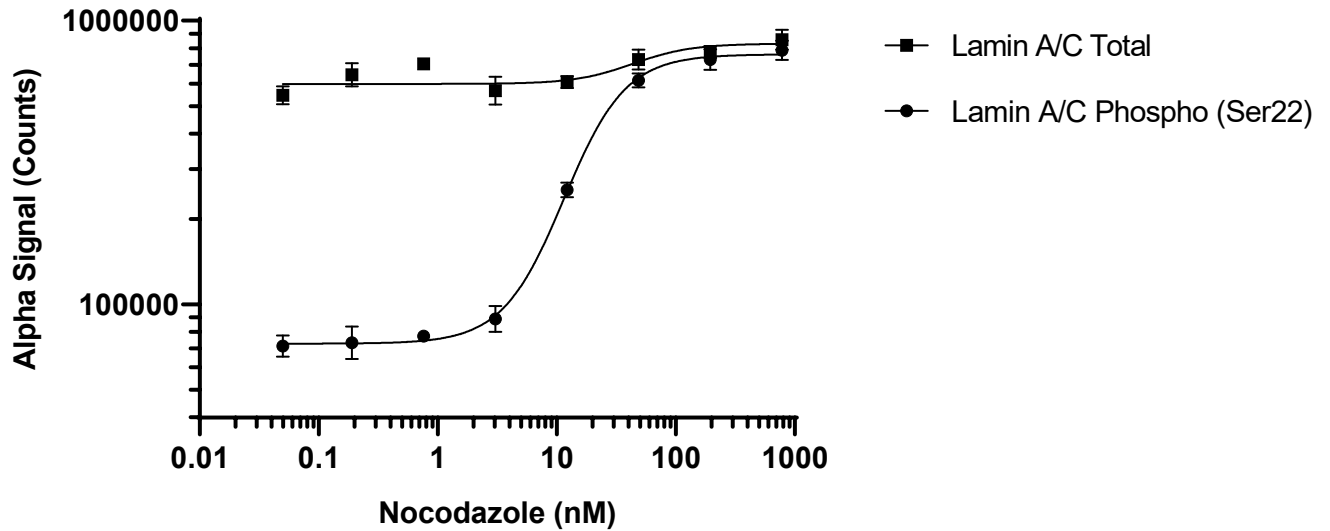
Positive Control Lysate: Prepared from A549 cells, cultured to confluence in T175 flasks in 10% FBS containing medium, lysed in 15 mL of Lysis Buffer B.

Representative data

Data obtained with a 2-plate, 2-incubation protocol. HeLa cells were seeded at 20K cells/well in a 96 well plate and incubated overnight. Cells were treated with Flavopiridol at the indicated concentrations with 2.5 μM Nocodazole for 18 hours. Cells were lysed with Lysis Buffer B and assayed separately for Phospho (Ser22) and Total Lamin A/C using respective *SureFire Ultra* kits. Equivalent to approximately 1,000 cells/datapoint.



Data obtained with a 2-plate, 2-incubation protocol. SH-SY5Y cells were seeded at 20K cells/well in a 96 well plate and incubated overnight. Cells were treated with Nocodazole at the indicated concentrations for 18 hours. Cells were lysed with Lysis Buffer B and assayed separately for Phospho (Ser22) and Total Lamin A/C using respective *SureFire Ultra* kits. Equivalent to approximately 1,000 cells/datapoint.



The information provided in this document is for reference purposes only and may not be all-inclusive. Revvity, Inc., its subsidiaries, and/or affiliates (collectively, "Revvity") do not assume liability for the accuracy or completeness of the information contained herein. Users should exercise caution when handling materials as they may present unknown hazards. Revvity shall not be liable for any damages or losses resulting from handling or contact with the product, as Revvity cannot control actual methods, volumes, or conditions of use. Users are responsible for ensuring the product's suitability for their specific application. REVVITY EXPRESSLY DISCLAIMS ALL WARRANTIES, INCLUDING WARRANTIES OF MERCHANTABILITY OR FITNESS FOR A PARTICULAR PURPOSE, REGARDLESS OF WHETHER ORAL OR WRITTEN, EXPRESS OR IMPLIED, ALLEGEDLY ARISING FROM ANY USAGE OF ANY TRADE OR ANY COURSE OF DEALING, IN CONNECTION WITH THE USE OF INFORMATION CONTAINED HEREIN OR THE PRODUCT ITSELF"

