

AlphaLISA® SureFire® Ultra™

Human Cyclin D3 Total Detection Kit

Product number: ALSU-TCYCD3-A500, ALSU-TCYCD3-A10K,
ALSU-TCYCD3-A50K, ALSU-TCYCD3-A-HV



Kit specificity:

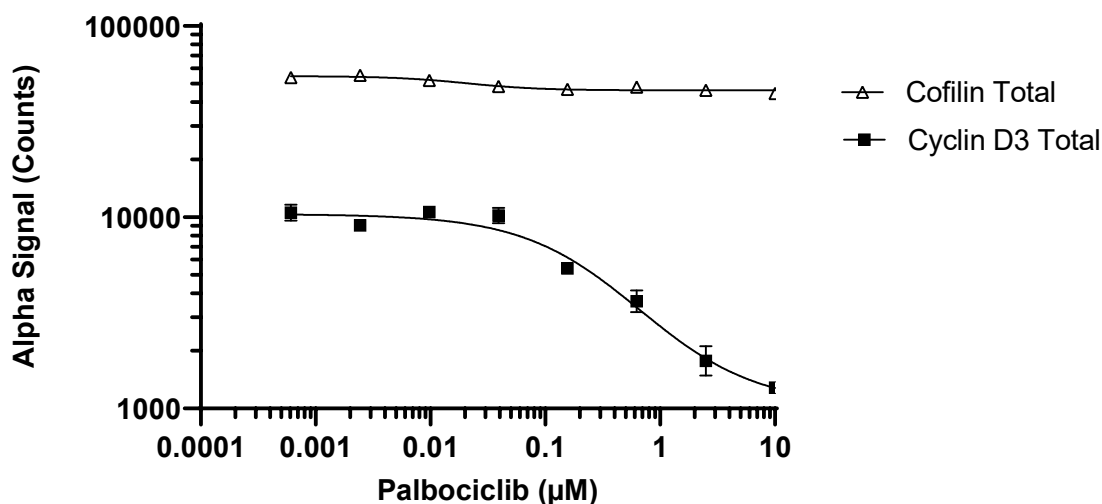
This assay kit contains antibodies which recognize distinct epitopes on Cyclin D3. The protein detected by this kit corresponds to UniProt ID P30281. Cyclin D3 is also known as G1/S-specific cyclin-D3. These antibodies recognize Cyclin D3 of human origin. Other species should be tested on a case-by-case basis.

Control lysate information:

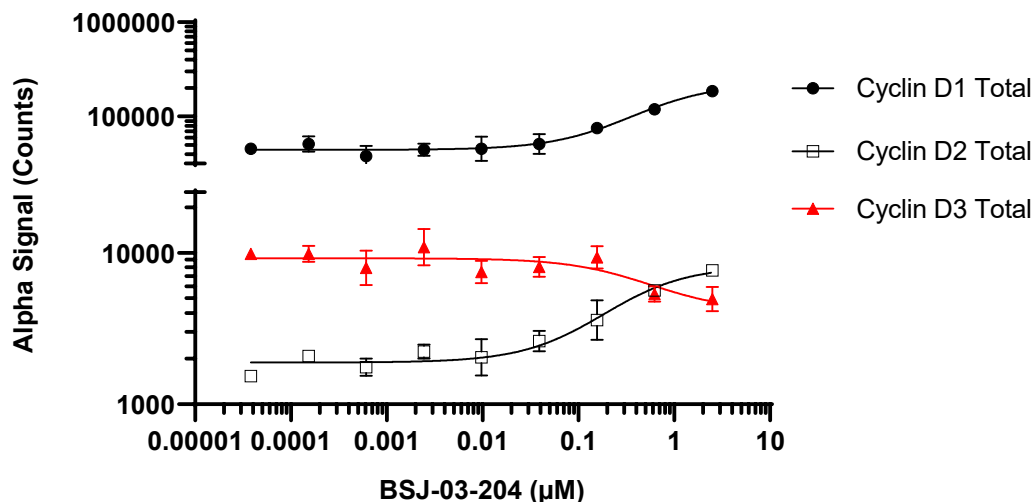
Positive Control Lysate: Prepared from HeLa cells, cultured to confluence in T175 flasks in 10% FBS containing medium, lysed with 4 mL of Lysis Buffer.

Representative data

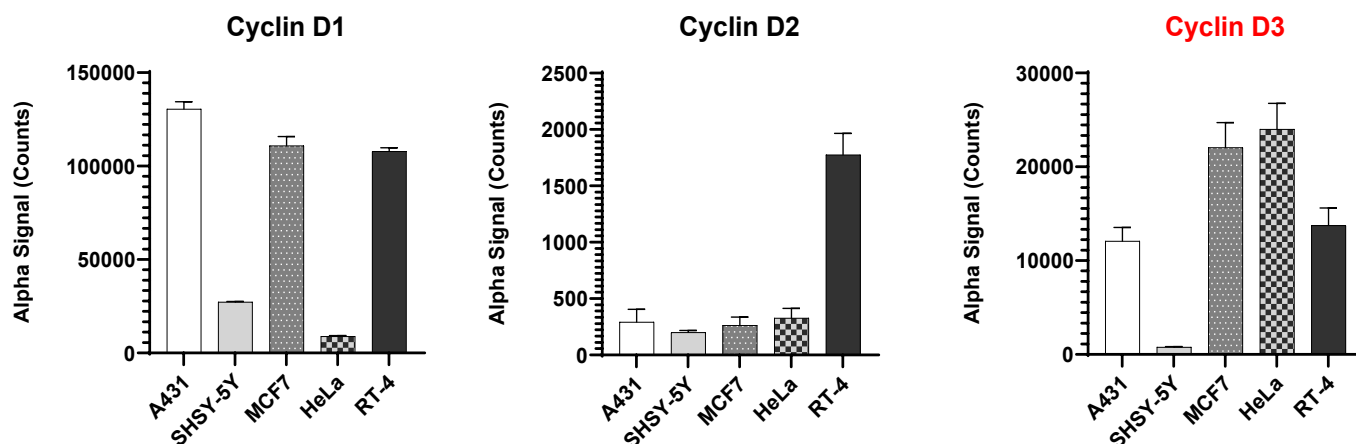
Data obtained with a 2-plate, 2-incubation protocol. RT-4 cells were seeded at 60K cells/well in a 96 well plate and incubated overnight. Cells were treated with Palbociclib at the indicated concentrations for 24 hours. Cells were lysed with Lysis Buffer and assayed separately for Total Cyclin D3 and Total Cofilin using respective *SureFire Ultra* kits. Equivalent to approximately 6,000 cells/datapoint for Total Cyclin D3 and 120 cells/datapoint for Total Cofilin.



Data obtained with a 2-plate, 2-incubation protocol. RT-4 cells were seeded at 30K cells/well in a 96 well plate and incubated overnight. Cells were treated with BSJ-03-204 at the indicated concentrations for 24 hours. Cells were lysed with Lysis Buffer and assayed separately for Cyclin D1, Cyclin D2 and Cyclin D3 using respective *SureFire Ultra* kits. Equivalent to approximately 3,000 cells/datapoint.



Data obtained with a 2-plate, 2-incubation protocol. Various cell lines were seeded at 40K cells/well in a 96 well plate and incubated overnight. Cells were lysed with Lysis Buffer and assayed separately for Cyclin D1, Cyclin D2 and Cyclin D3 using respective *SureFire Ultra* kits. Equivalent to approximately 4,000 cells/datapoint.



The information provided in this document is for reference purposes only and may not be all-inclusive. Revvity, Inc., its subsidiaries, and/or affiliates (collectively, "Revvity") do not assume liability for the accuracy or completeness of the information contained herein. Users should exercise caution when handling materials as they may present unknown hazards. Revvity shall not be liable for any damages or losses resulting from handling or contact with the product, as Revvity cannot control actual methods, volumes, or conditions of use. Users are responsible for ensuring the product's suitability for their specific application. REVVITY EXPRESSLY DISCLAIMS ALL WARRANTIES, INCLUDING WARRANTIES OF MERCHANTABILITY OR FITNESS FOR A PARTICULAR PURPOSE, REGARDLESS OF WHETHER ORAL OR WRITTEN, EXPRESS OR IMPLIED, ALLEGEDLY ARISING FROM ANY USAGE OF ANY TRADE OR ANY COURSE OF DEALING, IN CONNECTION WITH THE USE OF INFORMATION CONTAINED HEREIN OR THE PRODUCT ITSELF"

