

Alpha SureFire® Ultra™ Multiplex

## Human p-CDK1 (Tyr15) + Total CDK1 Detection Kit

**Product number:** MPSU-PTCDK1-M500, MPSU-PTCDK1-M10K  
 MPSU-PTCDK1-M50K, MPSU-PTCDK1-M-HV



### Kit specificity:

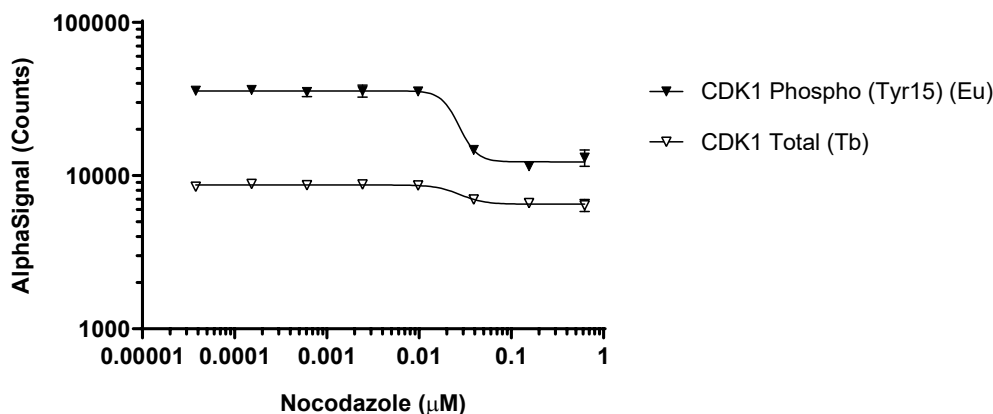
This assay kit contains antibodies which recognize the phospho-Tyr15 epitope and a distal epitope on CDK1, plus antibodies to measure the total levels of CDK1. The protein detected by this kit corresponds to UniProt ID P06493. CDK1 is also known as CDC2 and CDC28A. These antibodies recognize CDK1 of human origin. Other species should be tested on a case-by-case basis.

### Control lysate information:

Positive Control Lysate: Prepared from HEK293 cells, cultured to confluence in T175 flasks in 10% FBS containing media and lysed with 10 mL of Lysis Buffer.

### Representative data

Data obtained with a 2-plate, 2-incubation protocol. A431 cells were seeded at 40K cells/well in a 96 well plate and incubated overnight. Cells were treated with Nocodazole at the indicated concentrations for 20 hours. Cells were lysed with Lysis Buffer and assayed for Phospho (Tyr15) and Total CDK1 in the same wells of an assay plate using the SureFire Ultra Multiplex kit. Equivalent to approximately 8,000 cells/datapoint



The information provided in this document is for reference purposes only and may not be all-inclusive. Revvity, Inc., its subsidiaries, and/or affiliates (collectively, "Revvity") do not assume liability for the accuracy or completeness of the information contained herein. Users should exercise caution when handling materials as they may present unknown hazards. Revvity shall not be liable for any damages or losses resulting from handling or contact with the product, as Revvity cannot control actual methods, volumes, or conditions of use. Users are responsible for ensuring the product's suitability for their specific application. REVVITY EXPRESSLY DISCLAIMS ALL WARRANTIES, INCLUDING WARRANTIES OF MERCHANTABILITY OR FITNESS FOR A PARTICULAR PURPOSE, REGARDLESS OF WHETHER ORAL OR WRITTEN, EXPRESS OR IMPLIED, ALLEGEDLY ARISING FROM ANY USAGE OF ANY TRADE OR ANY COURSE OF DEALING, IN CONNECTION WITH THE USE OF INFORMATION CONTAINED HEREIN OR THE PRODUCT ITSELF"