

AlphaLISA® SureFire® Ultra™

## Human p-CDC6 (Ser106) Detection Kit

**Product number:** ALSU-PCDC6-B500, ALSU-PCDC6-B10K,  
ALSU-PCDC6-B50K, ALSU-PCDC6-B-HV



### Kit specificity:

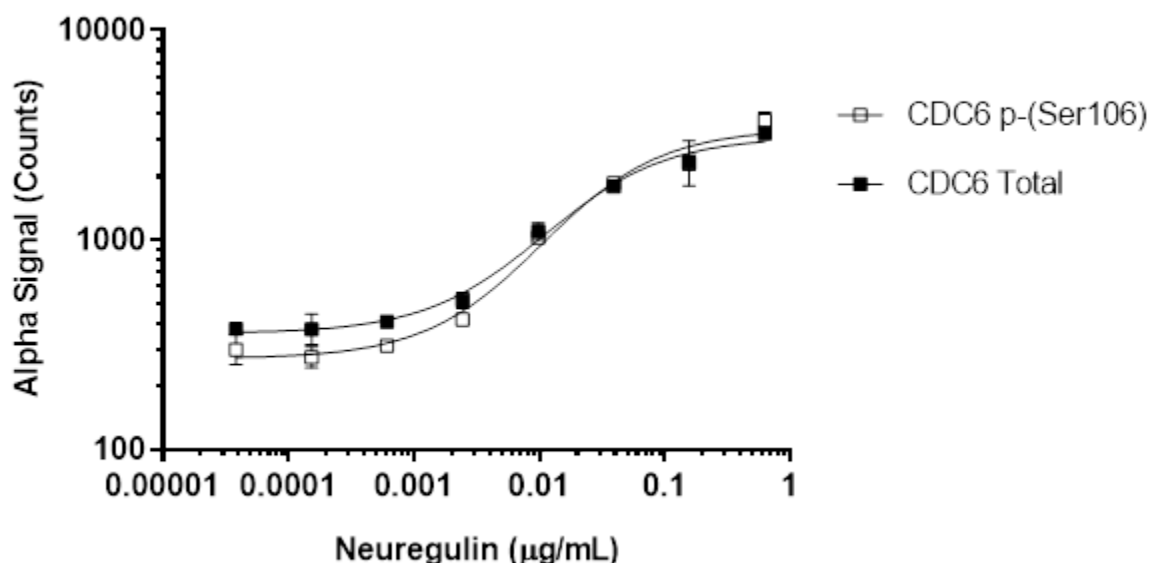
This assay kit contains antibodies which recognize the phospho-Ser106 epitope and a distal epitope on CDC6. The protein detected by this kit corresponds to UniProt ID Q99741. CDC6 is also known as Cell division control protein 6 homolog, CDC6-related protein (HsCdc18) and CDC18L. These antibodies recognize CDC6 of human origin. Other species should be tested on a case-by-case basis.

### Control lysate information:

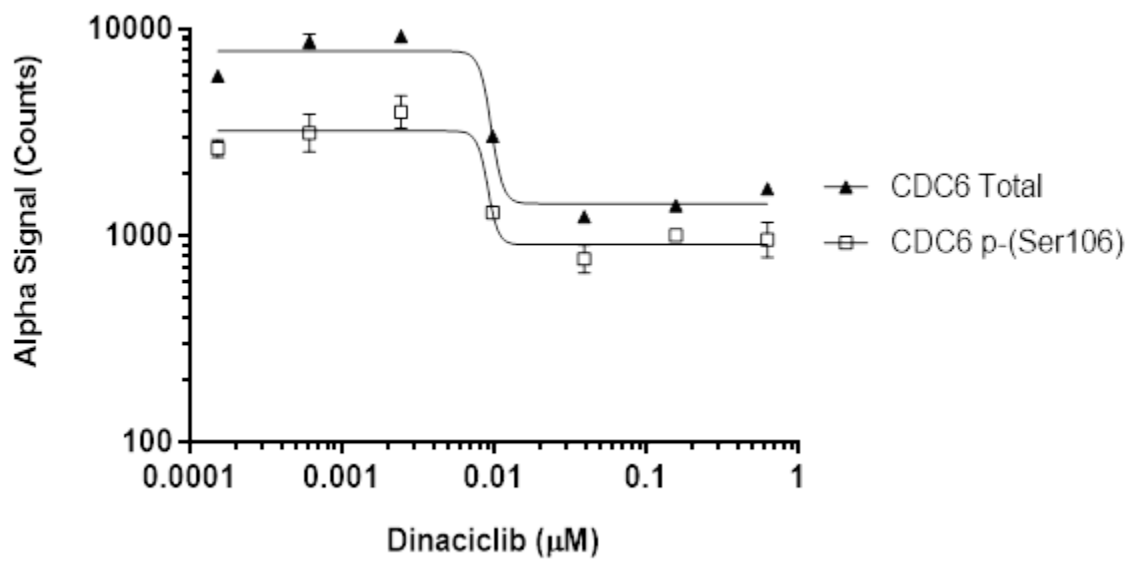
Positive Control Lysate: Prepared from HEK293 cells, cultured to confluence in T175 flasks in 10% FBS containing medium, then treated with 5  $\mu$ M Nocodazole for 20 hours. Cells were lysed in 4 mL of Lysis Buffer.

### Representative data

Data obtained with a 2-plate, 2-incubation protocol. MCF7 cells were seeded at 40K cells/well in a 96 well plate and incubated overnight. Cells were pre-treated with 20  $\mu$ M Wortmannin for 2 hours, then treated with Neuregulin1 at the indicated concentrations for 24 hours. Both treatments were performed in serum free medium. Cells were lysed with Lysis Buffer and assayed separately for Phopsho (Ser106) and Total CDC6 using respective *SureFire Ultra* kits. Equivalent to approximately 4,000 cells/datapoint.



Data obtained with a 2-plate, 2-incubation protocol. A549 cells were seeded at 40K cells/well in a 96 well plate and incubated overnight. Cells were treated with Dinaciclib at the indicated concentrations for 20 hours. Cells were lysed with Lysis Buffer and assayed separately for Phospho (Ser106) and Total CDC6 using respective *SureFire Ultra* kits. Equivalent to approximately 4,000 cells/datapoint.



The information provided in this document is for reference purposes only and may not be all-inclusive. Revvity, Inc., its subsidiaries, and/or affiliates (collectively, "Revvity") do not assume liability for the accuracy or completeness of the information contained herein. Users should exercise caution when handling materials as they may present unknown hazards. Revvity shall not be liable for any damages or losses resulting from handling or contact with the product, as Revvity cannot control actual methods, volumes, or conditions of use. Users are responsible for ensuring the product's suitability for their specific application. REVVITY EXPRESSLY DISCLAIMS ALL WARRANTIES, INCLUDING WARRANTIES OF MERCHANTABILITY OR FITNESS FOR A PARTICULAR PURPOSE, REGARDLESS OF WHETHER ORAL OR WRITTEN, EXPRESS OR IMPLIED, ALLEGEDLY ARISING FROM ANY USAGE OF ANY TRADE OR ANY COURSE OF DEALING, IN CONNECTION WITH THE USE OF INFORMATION CONTAINED HEREIN OR THE PRODUCT ITSELF"

