

AlphaLISA® SureFire® Ultra™

Human TREM2 Aggregate Detection Kit

Product number: ALSU-ATREM2-A500, ALSU-ATREM2-A10K,
ALSU-ATREM2-A50K, ALSU-ATREM2-A-HV



Kit specificity:

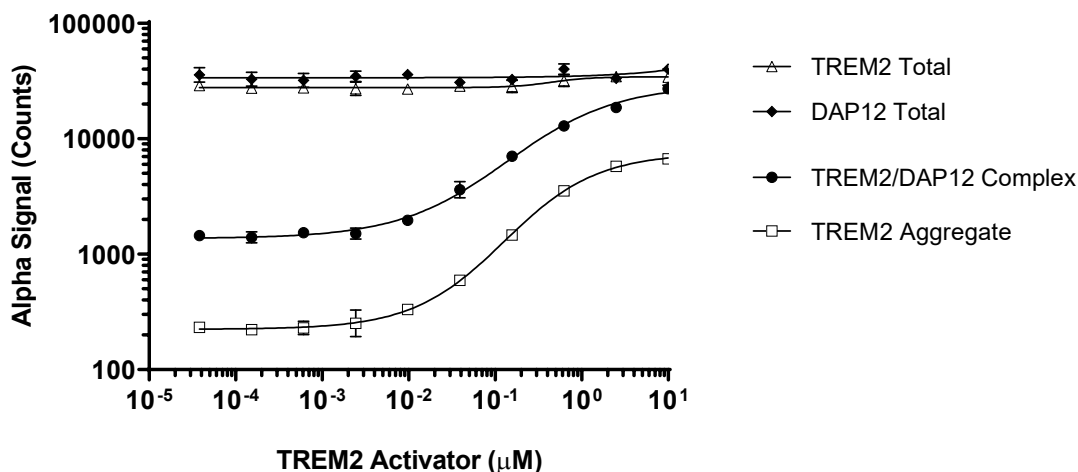
This assay kit contains antibodies which recognize aggregated TREM2. The protein detected by this kit corresponds to UniProt ID Q9NZC2. TREM2 is also known as Triggering receptor expressed on myeloid cells 2. These antibodies recognize TREM2 of human origin. Other species should be tested on a case-by-case basis.

Control lysate information:

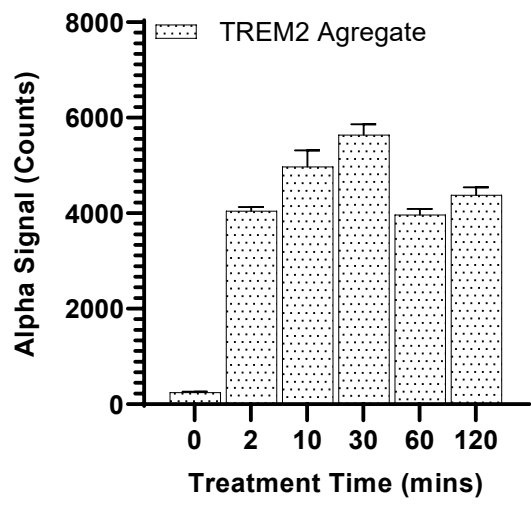
Positive Control Lysate: Prepared from THP1 cells, seeded at 600K/mL in 10% FBS containing media and treated with 35 ng/mL TGFβ for 20 hours. Cells were then washed with HBSS + 0.1% BSA, adjusted to 4 x 10⁶ cells/mL and treated with 10 μM TREM2 Activator (HY-O0206, MedChemExpress) for 30 minutes. Cells were lysed with the addition of 5X Lysis Buffer.

Representative data

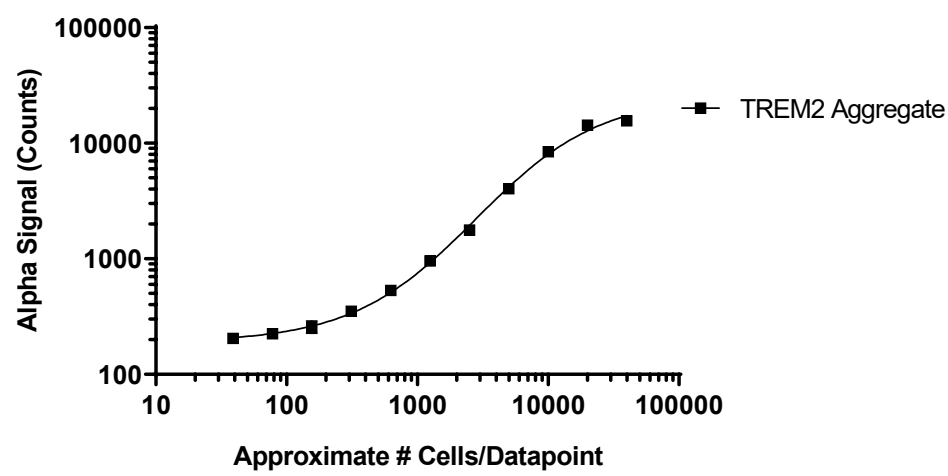
Data obtained with a 2-plate, 2-incubation protocol. THP1 cells were prepared at 600K/mL in 10% FBS containing media and treated with 35 ng/mL TGFβ for 20 hours. Cells were then washed with HBSS + 0.1% BSA and seeded at 400K cells/well in a 96 well plate. Cells were treated with a TREM2 Activator at the indicated concentrations for 10 minutes and lysed with 5X Lysis Buffer and assayed separately for TREM2 Aggregate, TREM2/DAP12 Complex, TREM2 Total and DAP12 Total using respective *SureFire Ultra* kits. Equivalent to approximately 16,000 cells or 1,600 cells/datapoint (TREM2 and DAP12 Total).



Data obtained with a 2-plate, 2-incubation protocol. THP1 cells were prepared at 600K/mL in 10% FBS containing media and treated with 35 ng/mL TGFβ for 20 hours. Cells were then washed with HBSS + 0.1% BSA and seeded at 400K cells/well in a 96 well plate. Cells were treated with 10 μM TREM2 Activator for the indicated time points and lysed with 5X Lysis Buffer and assayed for TREM2 Aggregate. Equivalent to approximately 16,000 cells/datapoint.



Control lysate prepared from THP1 cells was serially diluted in Lysis buffer and assayed for TREM2 Aggregate. Approximate number of cells/datapoint is indicated.



The information provided in this document is for reference purposes only and may not be all-inclusive. Revvity, Inc., its subsidiaries, and/or affiliates (collectively, "Revvity") do not assume liability for the accuracy or completeness of the information contained herein. Users should exercise caution when handling materials as they may present unknown hazards. Revvity shall not be liable for any damages or losses resulting from handling or contact with the product, as Revvity cannot control actual methods, volumes, or conditions of use. Users are responsible for ensuring the product's suitability for their specific application. REVVITY EXPRESSLY DISCLAIMS ALL WARRANTIES, INCLUDING WARRANTIES OF MERCHANTABILITY OR FITNESS FOR A PARTICULAR PURPOSE, REGARDLESS OF WHETHER ORAL OR WRITTEN, EXPRESS OR IMPLIED, ALLEGEDLY ARISING FROM ANY USAGE OF ANY TRADE OR ANY COURSE OF DEALING, IN CONNECTION WITH THE USE OF INFORMATION CONTAINED HEREIN OR THE PRODUCT ITSELF"

